

Hart-Miller Island (HMI) Community Benefits Agreement (CBA) Steering Committee

BALTIMORE COUNTY DEPARTMENT OF ENVIRONMENTAL PROTECTION AND SUSTAINABILITY
WATERWAY RESTORATION



AUGUST 22, 2024

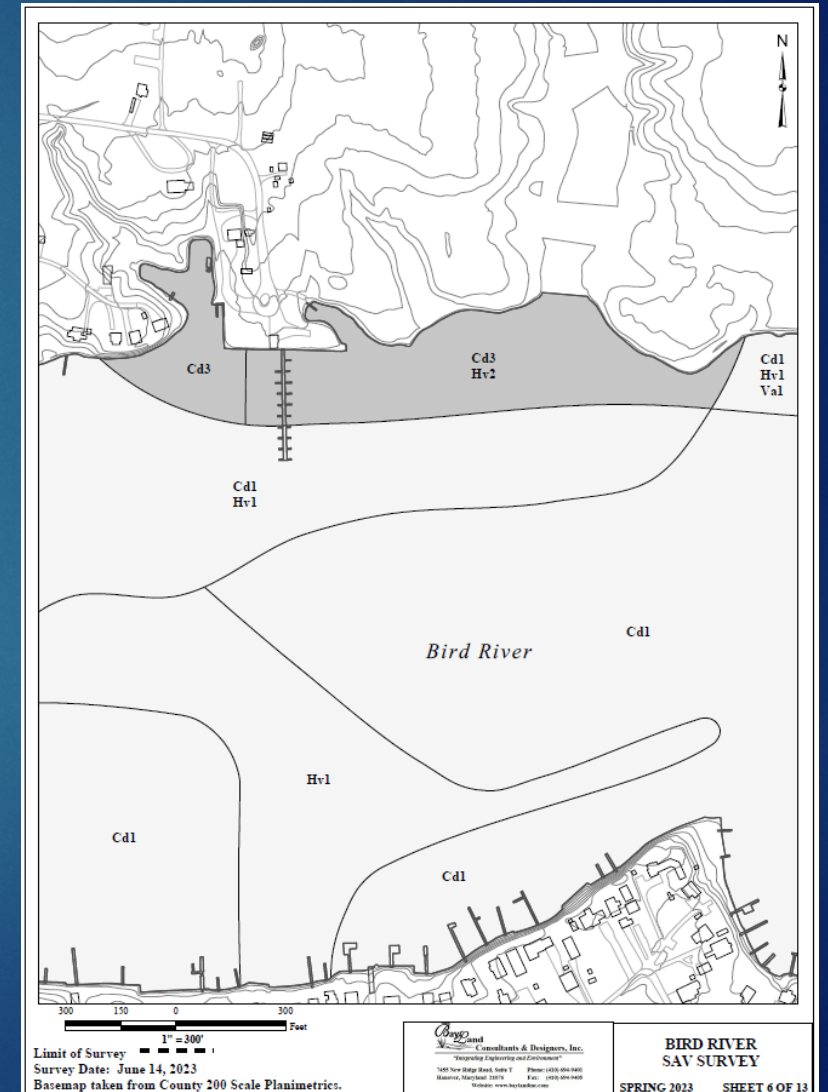
HMI CBA Steering Committee

- ▶ Presentation Outline
 - ▶ Background
 - ▶ Dredging Process
 - ▶ Current Dredging Projects
 - ▶ Hydrographic Surveys – 2024
 - ▶ FY26 Waterway Improvement Fund Grant Requests
 - ▶ Discussion



DEPS Waterway Restoration

- ▶ Dredging
- ▶ Shoreline Enhancement
- ▶ Submerged Aquatic Vegetation (SAV) Monitoring



Background

- ▶ 18,000+ registered vessels in Baltimore County
- ▶ Dredging projects are funded by County bonds and MD DNR Waterway Improvement Funds (WIF)
- ▶ WIF is funded by excise tax on boat sales and a portion of fuel taxes

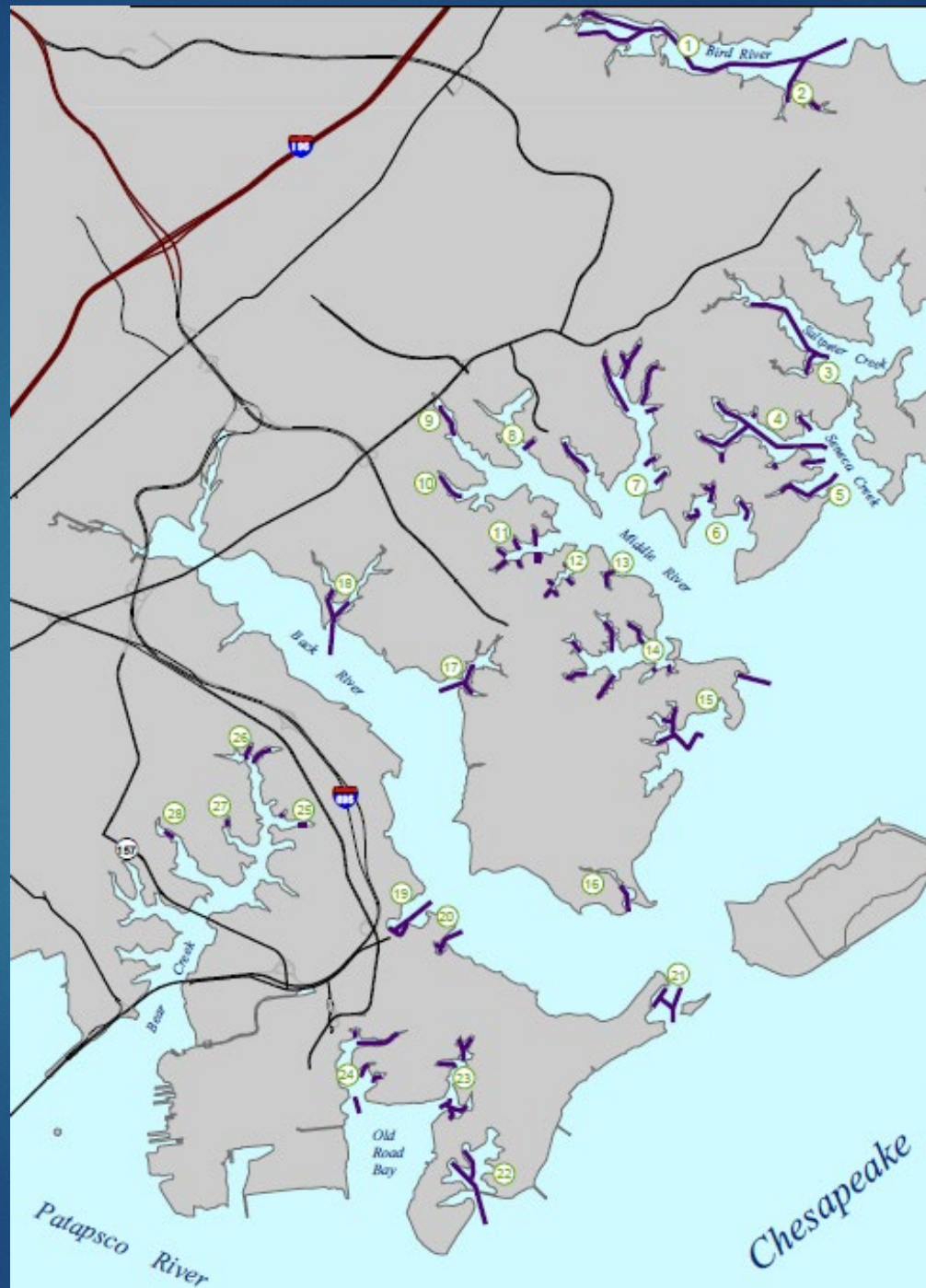


Background

- ▶ 28 channels
- ▶ 37 dredging projects completed since 1988

Reference Table

- | | |
|---------------------------|------------------------------|
| 1. Bird River | 15. Breezy Point/Browns Cove |
| 2. Railroad Creek | 16. Longs Creek |
| 3. Saltpeter/Dundee Creek | 17. Muddy Gut |
| 4. Seneca Creek | 18. Duck and Deep Creeks |
| 5. Goose Harbor | 19. Greenhill Cove |
| 6. Galloway Creek | 20. Lynch Point Cove |
| 7. Frog Mortar Creek | 21. Pleasure Island |
| 8. Chestnut Cove | 22. Shallow Creek |
| 9. Middle River Main | 23. North Point Creek |
| 10. Hopkins Creek | 24. Jones Creek |
| 11. Norman Creek | 25. Schoolhouse Cove |
| 12. Hogpen Creek | 26. Tabasco Cove |
| 13. Greyhound Cove | 27. Chink Creek |
| 14. Sue Creek | 28. Lynch Cove |

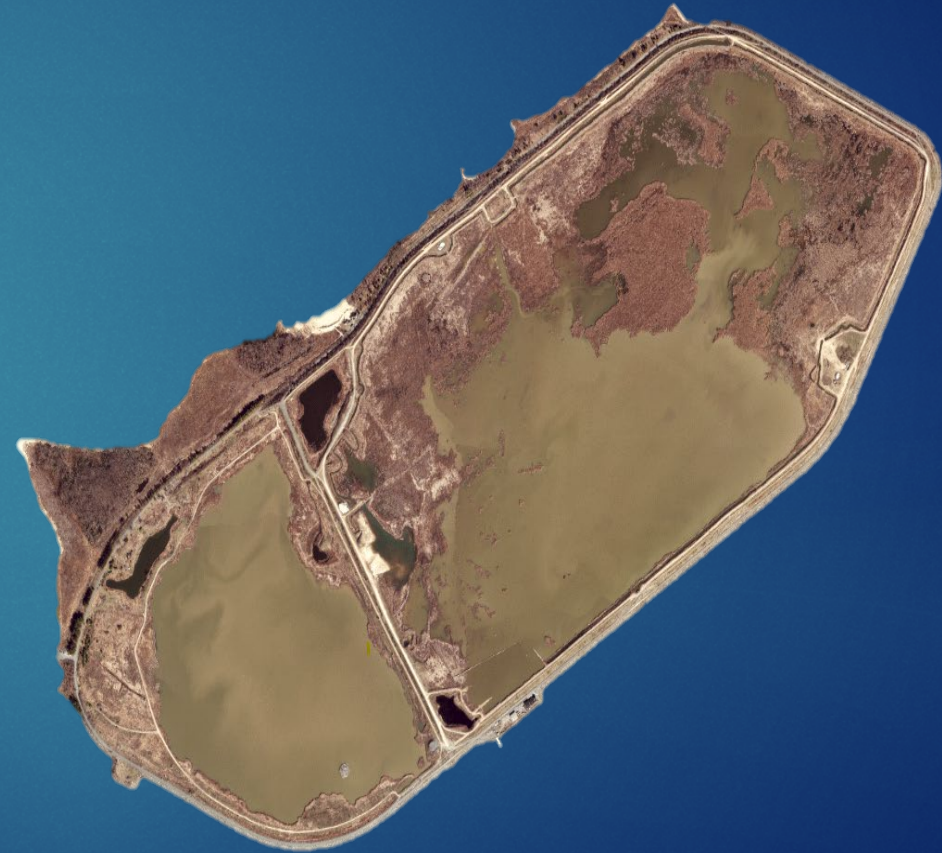


Waterway/Channel	Year
Bird River	2022/2023
Breezy Point	2007
Browns Cove	2006
Chestnut Cove	2001
Chink Creek	2009
Duck & Deep Creeks	2008
Frog Mortar Ch. 1,2	2000
Galloway Creek Ch.1,2,3	2007
Goose Harbor	2008
Greenhill Cove	2006
Hopkins Creek ch. 1,2	2000
Hogpen Creek	2000
Jones Creek	2009
Longs Creek	1974
Lynch Point Cove	2006
Lynch Cove	2009
Middle River (upper)	2000
Muddy Gut	2005
Norman Creek ch. 3,4,5,6	2000
North Point Creek	2009
Pleasure Island Channel	2011
Schoolhouse Cove	2009
Seneca Creek	2008
Seneca Coves 1,2,3,4,5	2007/2008
Shallow Creek	2009
Sue Creek	1999
Tabasco Cove	2001
Upper Bear Creek	1969



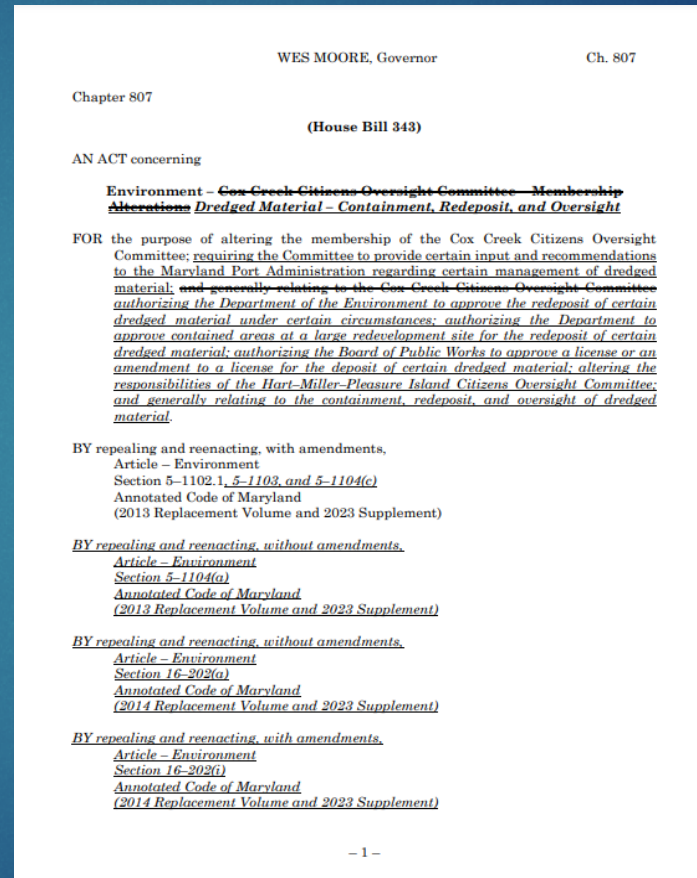
Background

- ▶ Hart-Miller Island (HMI) stopped receiving dredged material December 31, 2009
- ▶ HMI remaining capacity \approx 9 million cy



Background

- ▶ HB343/SB0020
 - ▶ Ch. 806, Acts 2024
- ▶ Reopened HMI for placement of dredge material from Baltimore County projects
- ▶ HB1165/SB969
 - ▶ Ch 558, Acts 2024
 - ▶ WIF may finance projects that beneficially use (BU) dredge material



Dredging Process

- ▶ Initial data collection
- ▶ Dredge material placement
- ▶ Design channel
- ▶ Community outreach
- ▶ State and Federal permitting
- ▶ Advertise and award contract
- ▶ Stake out channel
- ▶ Dredge channels
- ▶ Post dredge surveys



Current Projects

- ▶ Dredging
 - ▶ Pleasure Island Channel Maintenance Dredging & BU Project
 - ▶ Shallow Creek Maintenance Dredging Project
- ▶ Hydrographic Surveys 2024



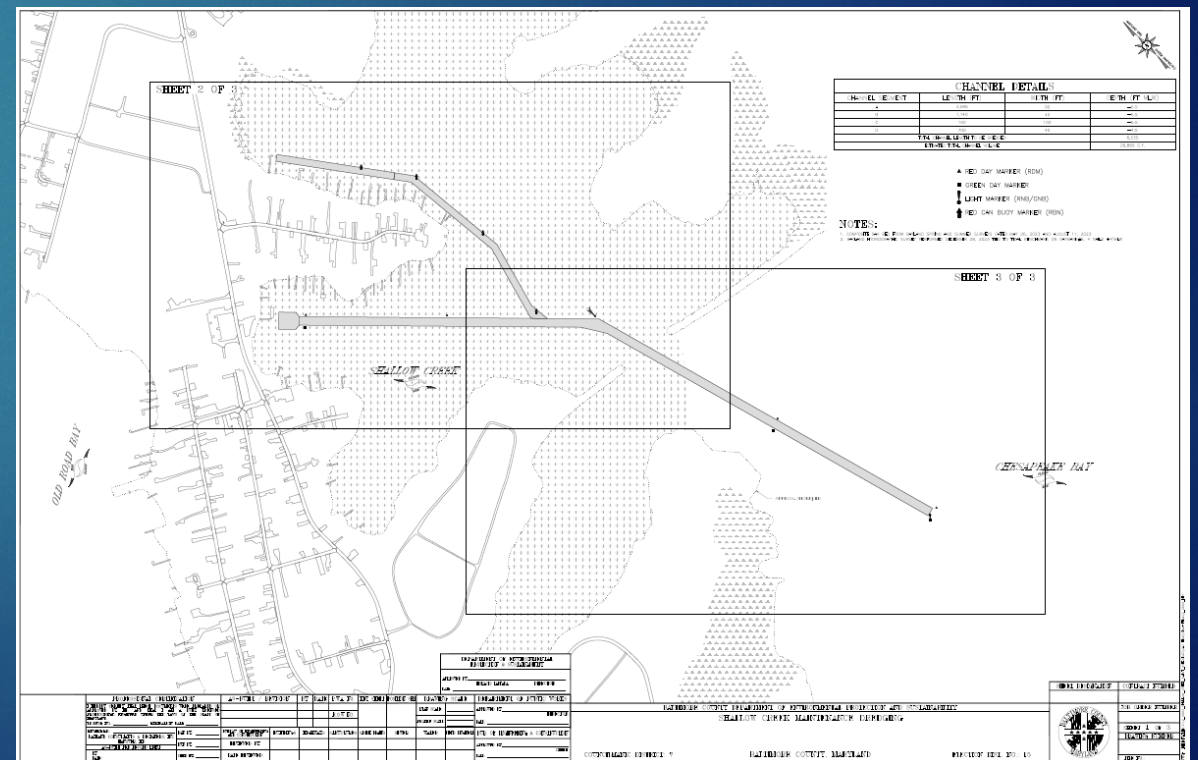
Pleasure Island Channel Maintenance Dredging & BU Project

- ▶ Status – design and permitting
 - ▶ Pleasure Island Channel “Cut”
 - ▶ Volume: ~34,000 CY
 - ▶ Placement: beneficial use project
 - ▶ Initiate construction fall 2026



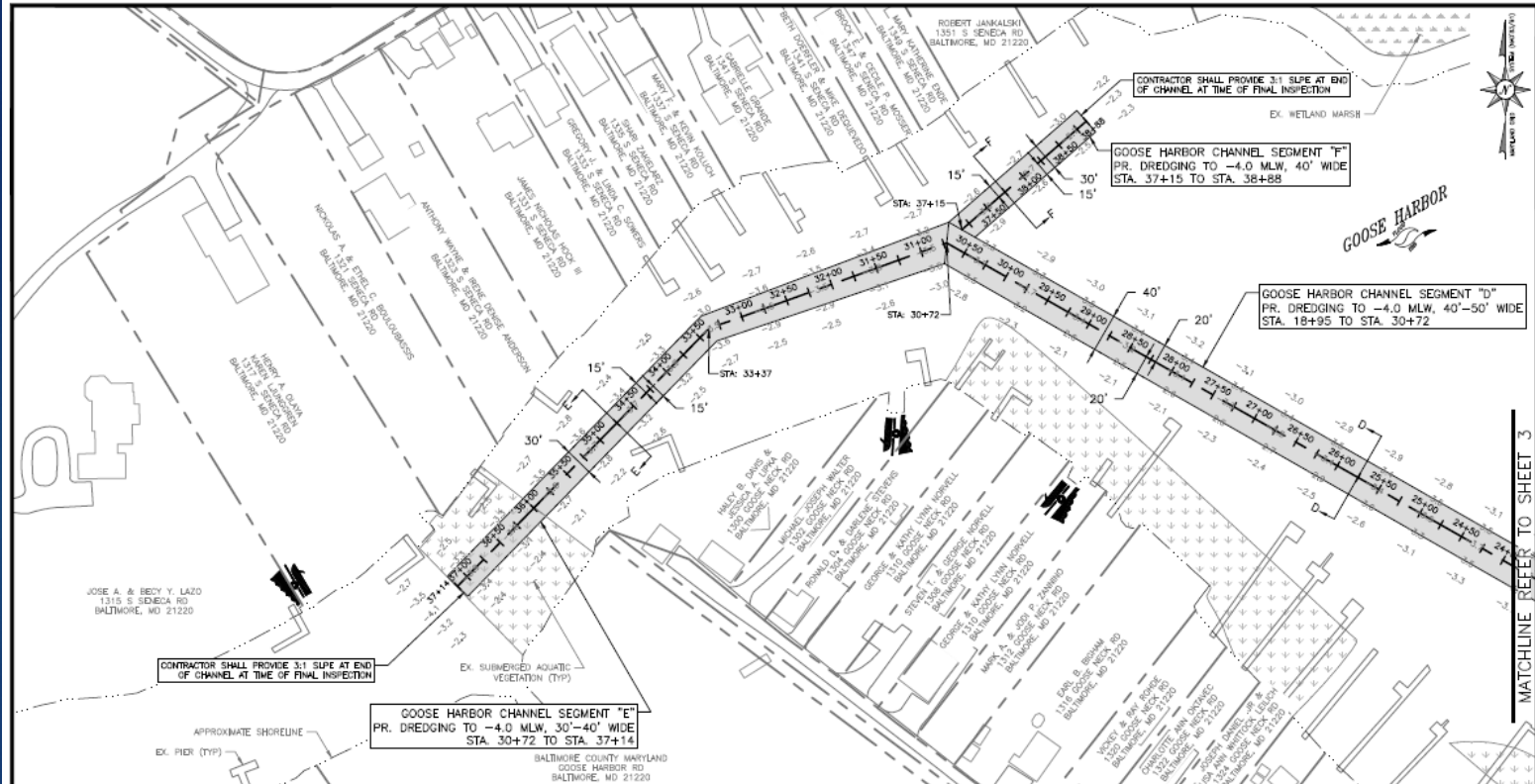
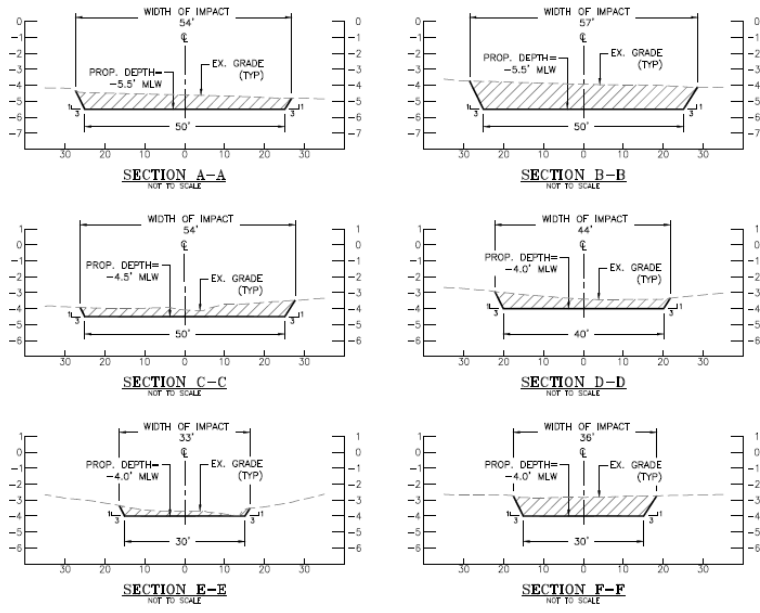
Shallow Creek Maintenance Dredging Project

- ▶ Status – design and permitting
 - ▶ Volume: ~26,000 CY
 - ▶ Placement: MPA Cox Creek Dredged Material Containment Facility
 - ▶ Initiate construction fall 2025



Hydrographic Surveys

CHANNEL DETAILS					
SEGMENT	STATION	LENGTH (FT)	WIDTH (FT)	DEPTH (FT)	VOLUME (CY)
A	0+00 TO 4+85	485	50	-5.5	1,048
B	4+85 TO 13+12	827	50	-5.5	3,088
C	13+12 TO 18+95	583	50	-4.5	573
D	18+95 TO 30+72	1,177	40-50	-4.0	1,101
E	30+72 TO 37+14	642	30-40	-4.0	357
F	37+15 TO 38+85	173	30	-4.0	265
TOTAL MAIN CHANNEL LENGTH					3,887 LF
TOTAL MAIN CHANNEL VOLUME					6,432 CY
TOTAL MAIN CHANNEL AREA OF IMPACT					192,316 SF = 4.41 AC
TOTAL NEW AREA OF DREDGING					0 SF = 0.00 AC
TOTAL MAIN CHANNEL AREA OF IMPACT TO 2024 SAV					3,467 SF = 0.08 AC



Bayland
Consultants & Designers, Inc.
"Integrating Engineering and Environment"

7455 New Ridge Road, Suite T Phone: (410) 694-9401
Hanover, Maryland 21076 Fax: (410) 694-9405
www.baylandinc.com

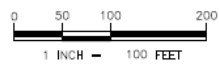
BALTIMORE COUNTY
DEPARTMENT OF ENVIRONMENTAL PROTECTION AND SUSTAINABILITY

**BALTIMORE COUNTY DREDGE
PLAN DEVELOPMENT 2024**

GOOSE HARBOR SECTIONS & DETAILS

SCALE: AS NOTED SHEET 5 OF 5

- NOTES:**
- BASEMAP COMPILED FROM BALTIMORE COUNTY PLANIMETRICS AND 2020 IMAGERY.
 - HYDROGRAPHIC SURVEY PERFORMED BY BAYLAND CONSULTANTS & DESIGNERS, INC. ON AUGUST 8, 2024.
 - SUBMERGED AQUATIC VEGETATION (SAV) SURVEY WAS PERFORMED BY BAYLAND CONSULTANTS & DESIGNERS, INC. ON MAY 30, 2024.
 - DEPTHS ARE IN FEET AND REFER TO MEAN LOW WATER (MLW) BASED NOAA VERTICAL TRANSFORMATION. THE PROJECT BENCHMARK (B.M.) IS A REBAR SET ON BEACON LIGHT MARINA PARKING LOT AS SHOWN ON THE PLANS. THIS B.M. IS THE SOLE VERTICAL CONTROL AND SHALL BE TAKEN AS +4.0' MLW; NO OTHER B.M. SHALL BE USED.
 - INFORMATION OBTAINED REPRESENTS RESULTS OF THE SURVEY PERFORMED ON THE DATE INDICATED, AND CAN ONLY BE CONSIDERED REPRESENTING CONDITIONS AT THAT TIME.



Bayland
Consultants & Designers, Inc.
"Integrating Engineering and Environment"

7455 New Ridge Road, Suite T Phone: (410) 694-9401
Hanover, Maryland 21076 Fax: (410) 694-9405
www.baylandinc.com

BALTIMORE COUNTY
DEPARTMENT OF ENVIRONMENTAL PROTECTION AND SUSTAINABILITY

**BALTIMORE COUNTY DREDGE
PLAN DEVELOPMENT 2024**

GOOSE HARBOR CHANNEL PLAN

SCALE: 1" = 100' SHEET 4 OF 5



MATCHLINE REFER TO SHEET 3

MD DNR

Waterway Improvement Fund

FY26 Grant Applications

- ▶ WIF Applications
 - ▶ Pleasure Island Maintenance Dredging & BU - Construction
 - ▶ Shallow Creek Maintenance Dredging - Construction
 - ▶ Baltimore County Waterway Permits
 - ▶ Maintenance Dredging (TBD) – Design & Construction
- ▶ WIF Application deadline - September 18, 2024



HMI CBA Considerations

- ▶ Prioritization and grouping of projects
 - ▶ Dredging need
 - ▶ Benefit to public
 - ▶ Time since last dredged
 - ▶ Proximity to HMI
- ▶ HMI Citizen Oversight Committee Input
- ▶ Leverage Community Benefit
- ▶ WIF Grant applications



Questions?

Dave Riter

