

Department of Environmental Protection and Sustainability



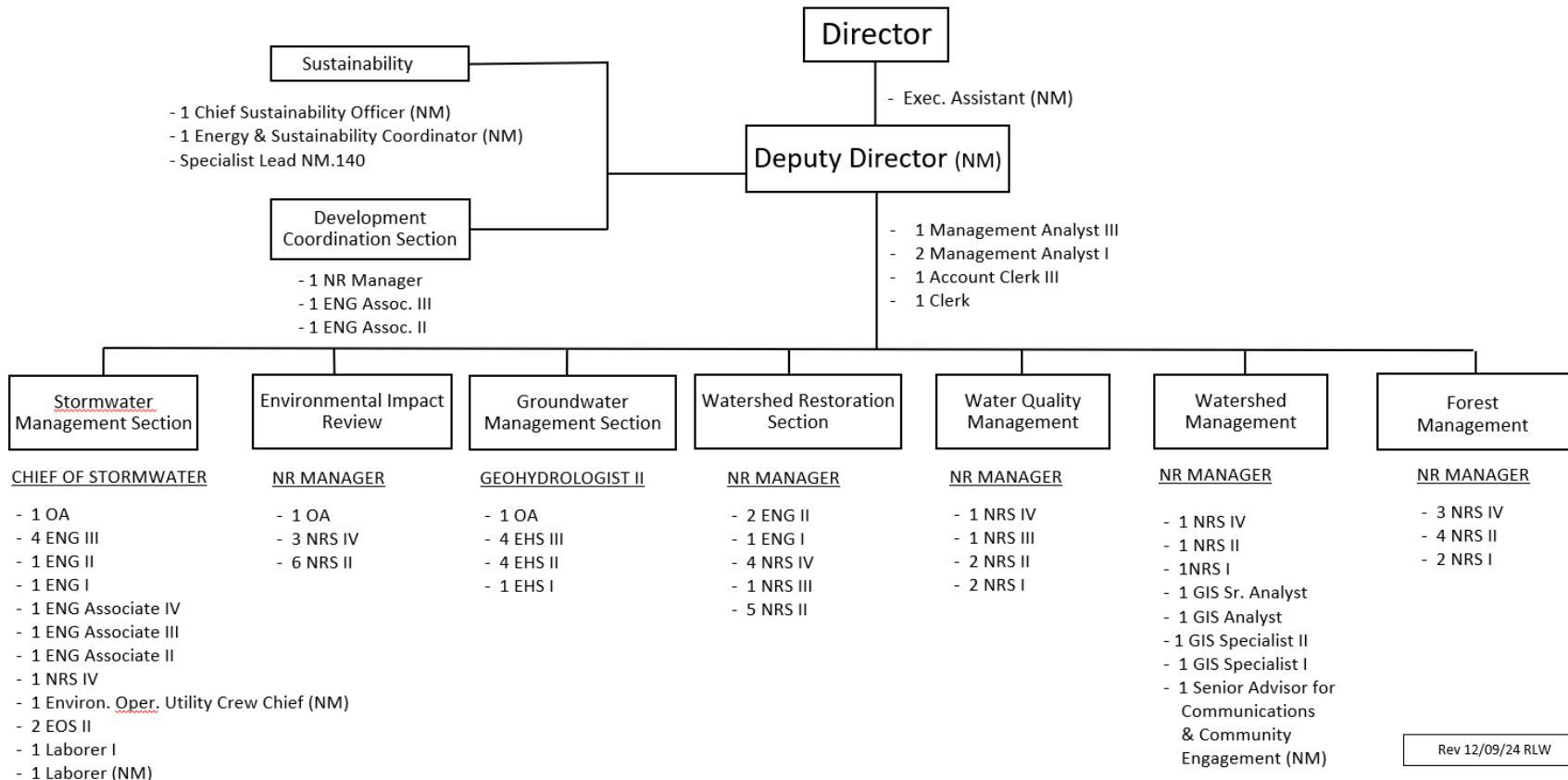
Director: Horacio Tablada

Department of Environmental Protection and Sustainability (DEPS)

Total Employees: 93
 FT Merit: 85
 FT Non-Merit: 8
 Date Prepared: December 09, 2024

Baltimore County FY24 ORGANIZATIONAL CHART

Agency Management
 DEPS



Rev 12/09/24 RLW

Capital Program Drivers

- MS4/NPDES Permits
 - New 5-year MS4 Permit issued Nov. 2021
- Impervious Surface Restoration – 3,167 acres
- Chesapeake Bay TMDL
- Local TMDLs

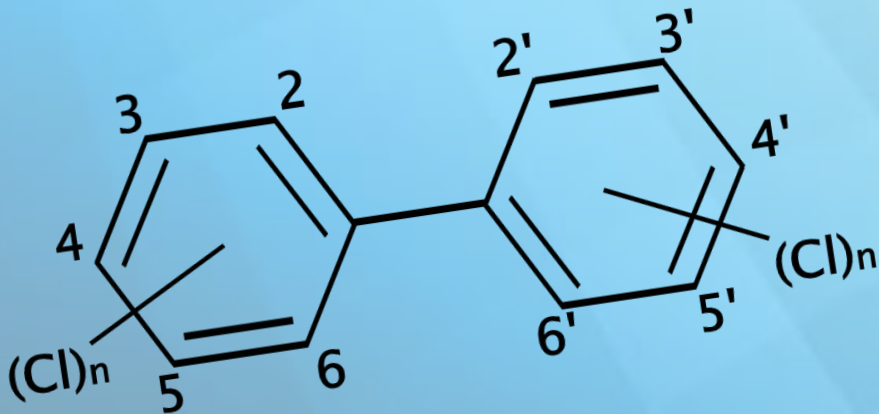
MS4 Permit: New Salt Management Plan

- Salt Management Plan submitted to MDE in Dec. 2024
- Implementing the Plan:
 - Outreach to residents using new messaging
 - Train staff in salt management annually
 - Equip new trucks with computerized controls
 - Prioritize drinking water reservoirs and wells
 - Target ≤ 500 lbs salt/lane mile/inch of snow
 - Track & report salt use for each winter storm
 - Monitor stream water conductivity



DEPS – Polychlorinated Biphenyls (PCBs)

- Drawing from \$9.5M+ Monsanto PCB lawsuit settlement award
- FY23-FY25 to date \$76K expended
 - 24 samples completed - 38% of Phase I monitoring
- Up to ~\$1M expected to be expended through FY26
 - Up to 550 samples within Phase I and Phase II monitoring



Maryland Fish Consumption Advisories
for Recreationally Caught Fish in Baltimore County, MD

Guidelines for Recreationally Caught Fish Species in Maryland Fresh, Estuarine, and Marine Waters

Recommended Meal Size: 8 oz or 9 crabs - General Population and Women; 3 oz or 4 crabs - Children

Note: Consumption recommendations based on spacing of meals to avoid elevated exposure levels

1 **Women** = women of childbearing age (women who are pregnant or may become pregnant, or are nursing)

2 **Children** = all young children up to age 6

♥ = Fish contains more than 1g beneficial fatty acids in a fillet the size of 2 decks of cards

★ = Fish where all dark meat and/or Belly Fat has been removed

Contaminant present in fish: * Mercury Δ PCBs + Pesticides ◇ PFOS

Species	Waterbody	Recommended Meals/Month		
		General Population	Women ¹	Children ²
Atlantic Croaker	Mid Bay: Patapsco to Upper Patuxent and	Δ	4	4
	Upper Chesapeake Bay and Tributaries	Δ	4	4
American Eel	Back River	Δ	4	4
	Bush River	Δ	Avoid	Avoid
	Bynum Run	*	4	4
	Middle River	Δ	1 every other month	1 every other month

DEPS Capital Improvement Projects

- Stream Restoration
- Shoreline Stabilization & Enhancement
- Stormwater Facility Maintenance & BMP Improvements
- Reforestation



DEPS Capital Projects: Resiliency/Sustainability Efforts

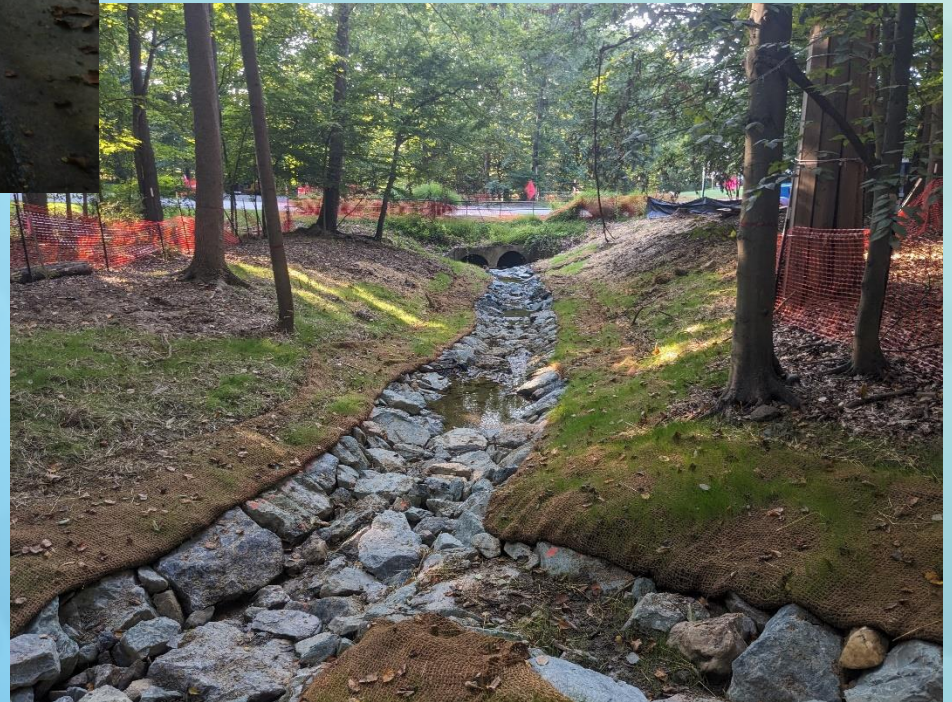
	Stream Restoration	Shoreline Stabilization & Protection	Stormwater Maintenance & BMP Improvements	Reforestation
Nuisance Flooding	Designed to not impact private/public assets	May attenuate frequent events	Mitigates runoff from development; reduces peak flows	Attenuates through canopy interception & vegetative uptake
Riverine Flooding	May be intentionally increased to reduce flow velocities & erosion (approach/outcome dependent)		Mitigates runoff from development; reduces peak flows	Attenuates through canopy interception & vegetative uptake
Sea Level Rise		May become ineffectual, but must be designed for current condition to be functional		
Severe Weather	Reduces erosion for a range of storm events	Attenuates erosion by interrupting wave action; revegetation facilitates soil cohesion	Mitigates runoff from development; reduces peak flows	Attenuates runoff through vegetative uptake and erosion by improving soil cohesion
Protective Measures	Attenuates erosion and protects public/private properties & infrastructure such as sanitary sewer, bridges & culverts	Protects public and private properties from erosion	Mitigates runoff from development; reduces peak flows	
Atmospheric Temperature Increase	Riparian corridor revegetation attenuates by blocking solar radiation			Facilitates biosequestration of atmospheric carbon dioxide; attenuates by blocking solar radiation

DEPS – Stream Restoration



BEFORE – Summer 2019

Minebank Run at Metfield
Road Stream Restoration
Towson, MD

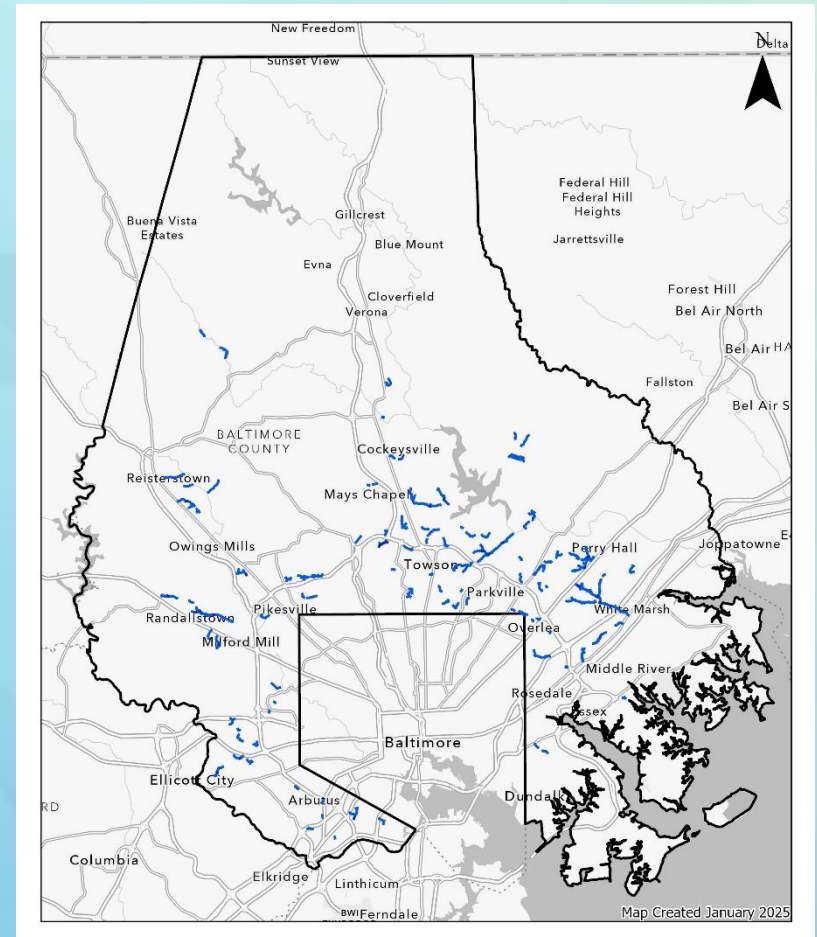


AFTER - Fall 2024

Current & Future Capital Waterway Improvement Projects

Stream Restoration

- From 1994 – FY25: 106 projects were completed, costing approximately \$177M
- Request for \$3.9M in FY26 towards 3 projects, including funding for the design of 2 new projects and construction of 1 current project
- Proposing \$14M to implement 10 projects for FY27 through FY29



DEPS – Shoreline Stabilization & Enhancement



BEFORE – Summer 2018

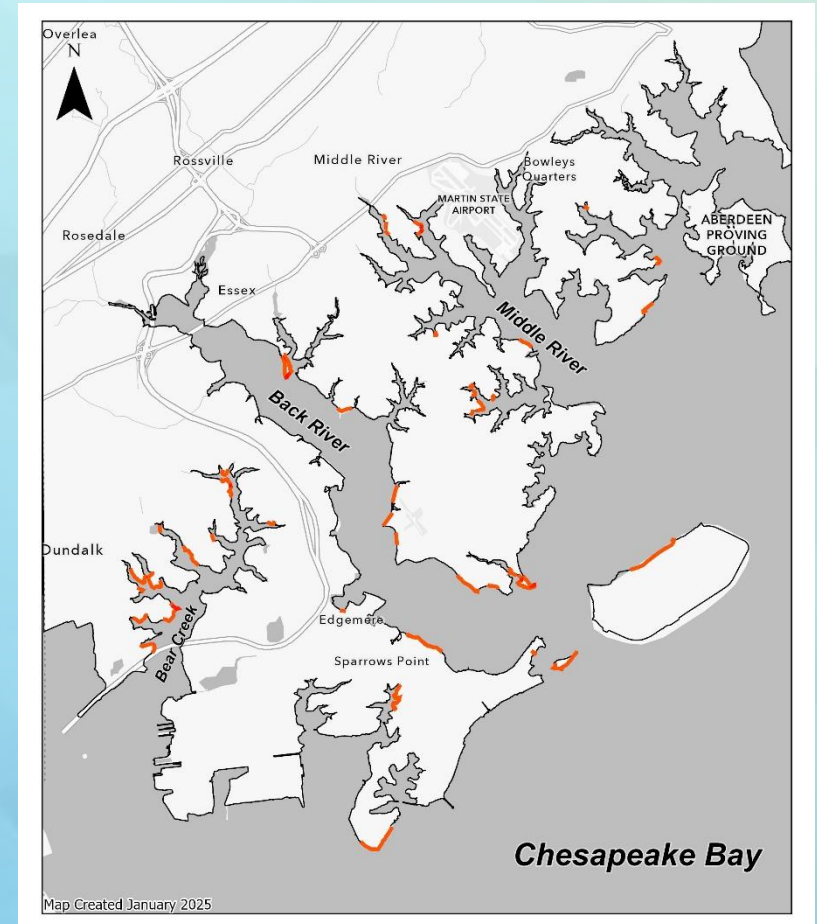
CHESTERWOOD PARK
SHORELINE
ENHANCEMENT



AFTER – Fall 2024

Current & Future Capital Waterway Improvement Projects Shoreline Stabilization & Enhancement

- From 1991 – FY25: 42 projects completed, costing approximately \$22M
- The FY26 budget request is \$4M for construction of 2 projects
- For FY27 through FY29, proposing \$11M for the implementation of 5 new projects and the construction of 2 projects currently in design



DEPS – Stormwater Facility Maintenance & BMP Improvements

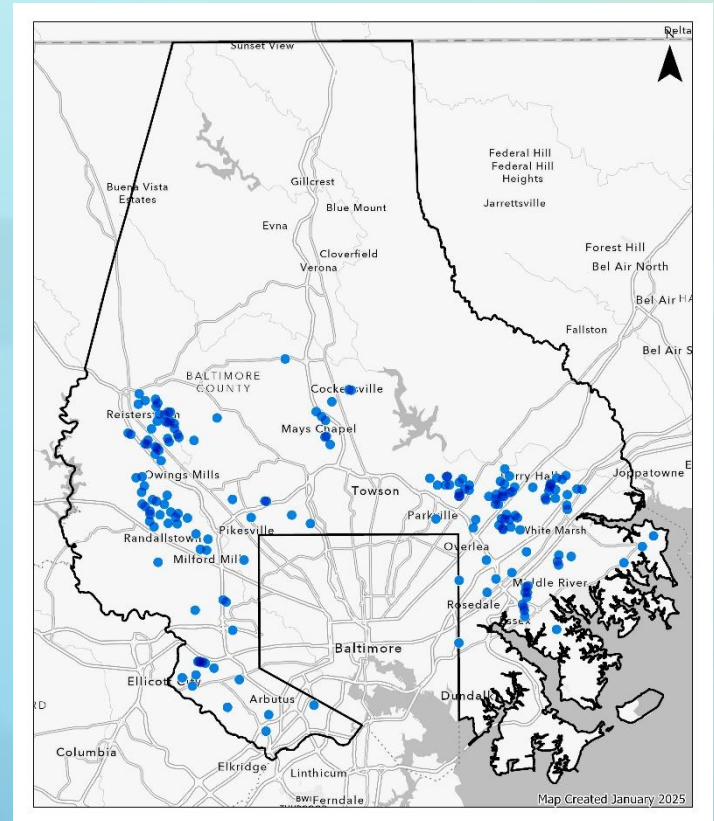


FAC. #190 AT HEWITT FARMS
IN GWYNNNS FALLS WATERSHED
1-YR POST CONVERSION

Summer 2022

Current & Future Capital Waterway Improvement Projects Stormwater Facility Maintenance & BMPs

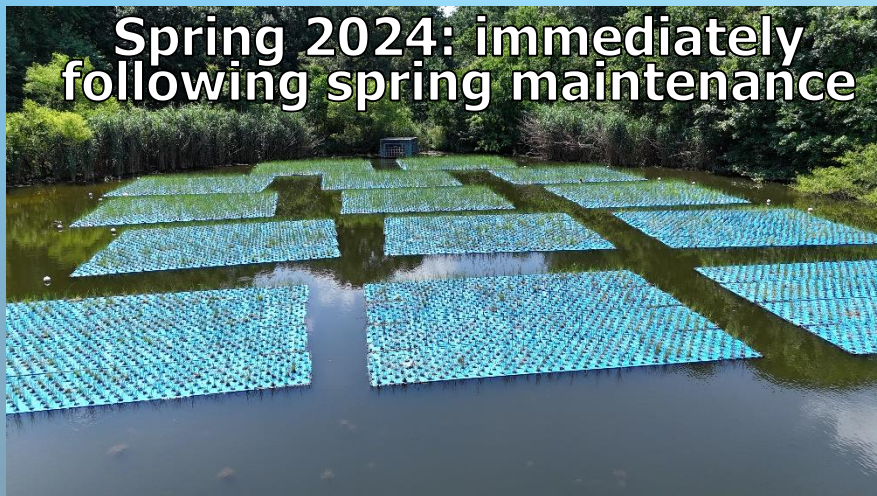
- From 2013 – FY25: 183 projects were completed costing approximately \$15M
- FY26 request of \$3.6M includes funding for 11± water quality projects, 17± BMP repairs, and triennial maintenance of 420± facilities
- Proposing 16 projects costing \$3.6M per year for FY26 through FY28; request includes repairs and triennial maintenance for existing facilities



Stormwater Facility Maintenance & BMPs

Floating Treatment Wetlands

- \$144K spent on preparation, purchase, installation, and maintenance of floating treatment wetland (FTW) mats at one stormwater management facility as a pilot study.
- Pilot study: investigate FTW effectiveness as a water quality BMP for County wet ponds.
- Dissolved oxygen & temperature sensors deployed at pilot and control facilities.
- Second FTW pilot installation planned for spring 2025.



DEPS - Office of Sustainability

- Founded in 2019 the Office of Sustainability works across County Government
- Most Sustainability capital investments are funded by collaborating agencies on a wide range of projects
- In FY24-25 Sustainability directly managed \$2.3M in capital funds including \$1M for analyzing Building Energy Performance and \$250K for EV Charging study and software.



Turner Station

DEPS - Office of Sustainability

Collaboratively Driving Interdepartmental Investments

- Property Management – \$4.5M in Energy Performance Contracts, \$1.5M in Solar , \$2M in EV Charging FY22-26
- DPWT – \$2.5M for Turner Station Flood Mitigation FY24-27
- OBF – \$14.5M for 435 Hybrid and Electric Vehicles FY19-25



DEPS – Reforestation

Rural Reforestation



Parkton, MD

Urban Reforestation



Inverness Park

Operation ReTree and Street Tree Replacement



Eastwood Community

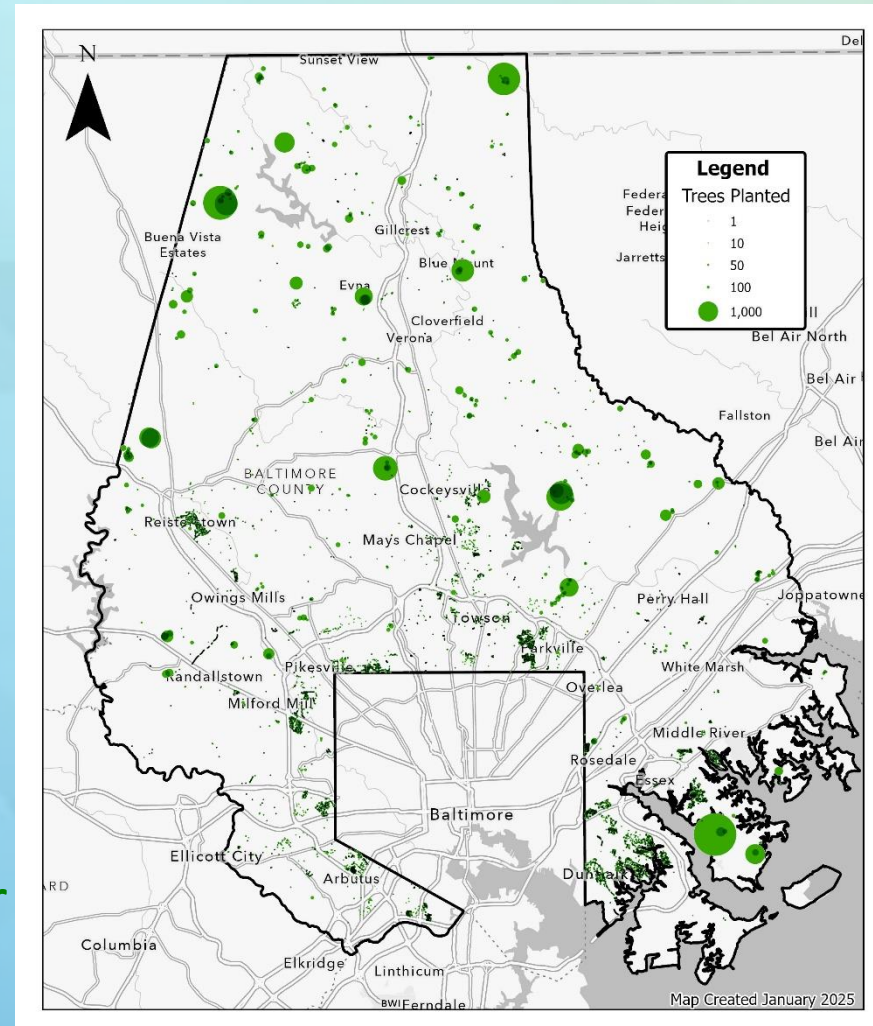


Charlesmont Community

Current & Future Capital Waterway Improvement Projects

Reforestations

- From 2013 – FY25: 295 projects (480 acres and 68,500 trees) were installed costing approximately \$6.39M.
- The FY26 request of 725K includes funding for 30 acres of Reforestations.
- Proposing 50 acres/year of reforestation projects costing between \$1.1M – 1.46M per year for FY27 through FY30.



Current & Future Capital Waterway Improvement Projects

Reforestation and Tree Maintenance

- From 2020 – FY25: 59 projects were completed costing \$1.3M.
- FY26 request of 274K includes funding for 14± tree maintenance projects.
- Proposing 18± tree maintenance projects costing between \$385K- 423K per year for FY27 through FY30.

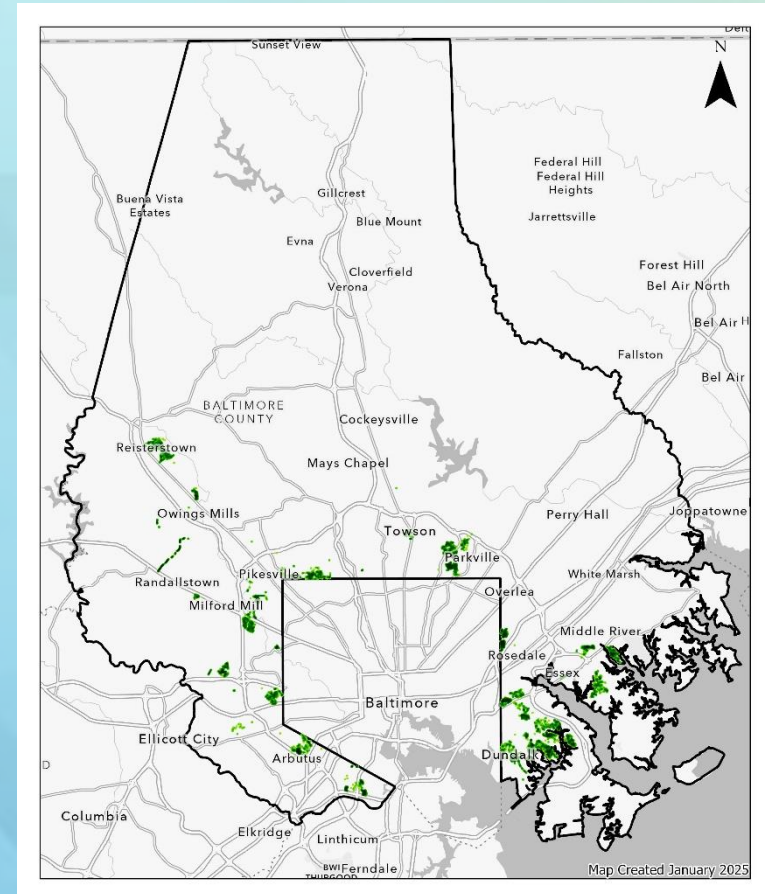


Millers, MD

Current & Future Capital Waterway Improvement Projects

Reforestations: Operation ReTree and Street Tree Replacement

- Trees planted in urban communities increased significantly with the start of Operation ReTree in 2021 and the Street Tree Replacement Program in 2022.
- From 2021 – FY25: 63 projects (6,970 trees) were installed costing approximately \$4.25M. An additional 1,750 trees will be planted annually using \$1.4M of grant funds requested in FY24 and \$625,000 received annually from the operating budget.





Horacio Tablada, Director
htablada@baltimorecountymd.gov
410-887-8028