



Baltimore County Planning Board
Capital Improvement Program
Land Preservation FY25
January 25, 2024

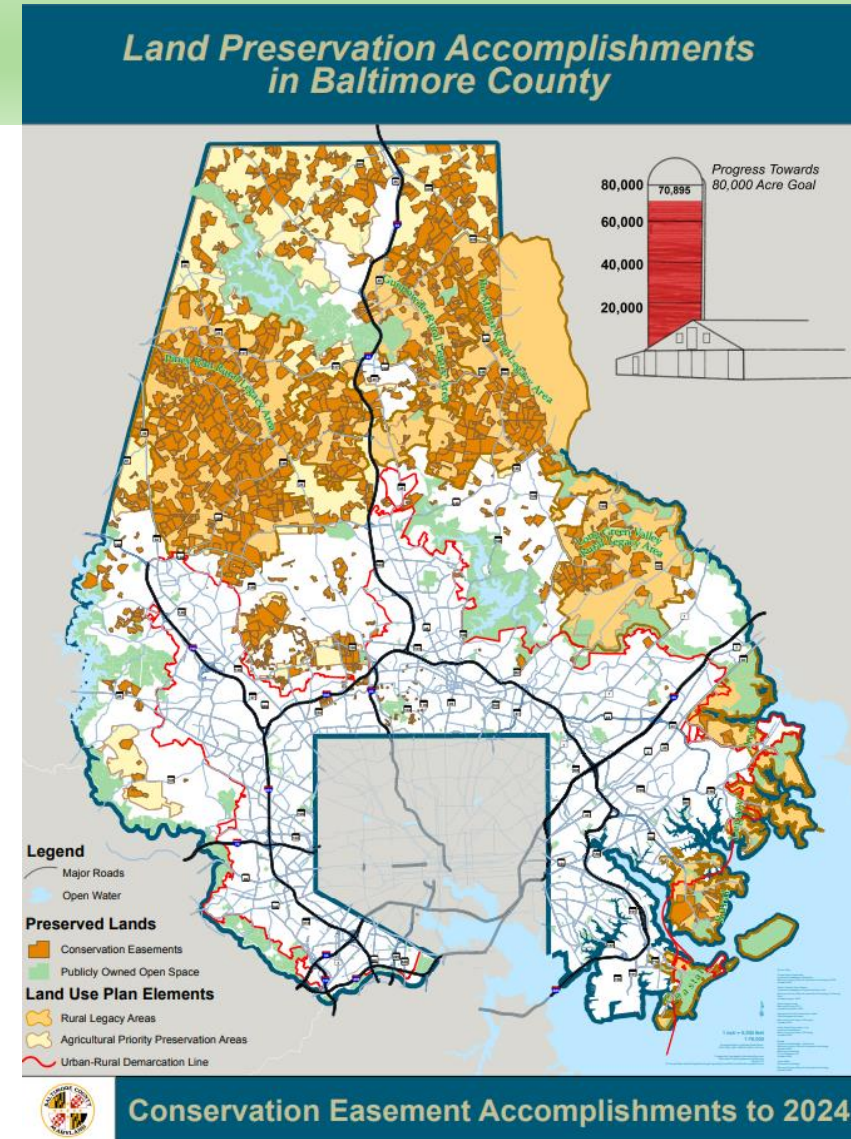


Land Preservation Goal

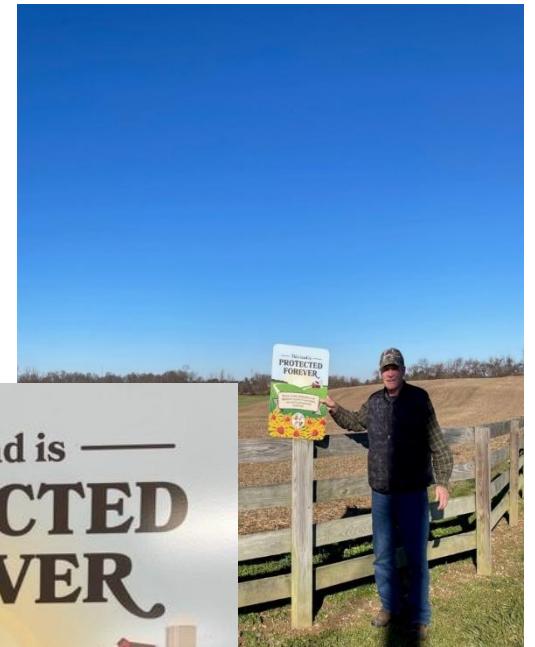
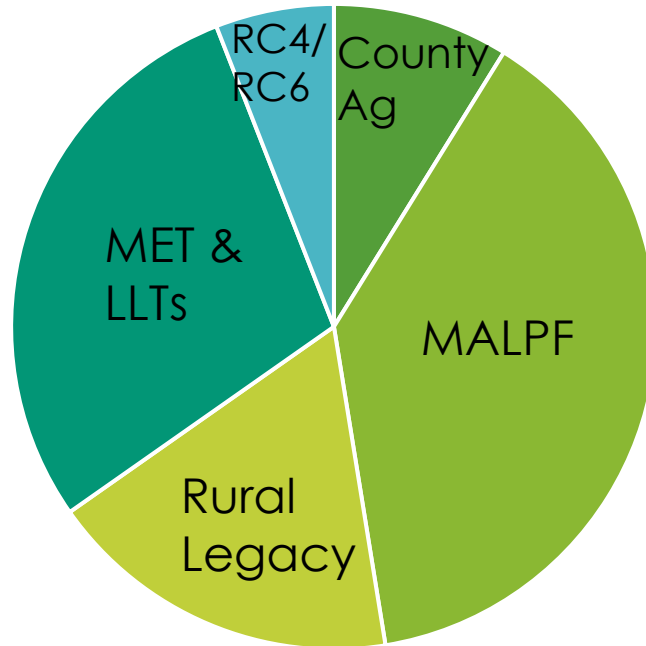
Objective for Land Preservation:

Permanently preserve lands for agriculture and natural resources to achieve the goal of at least 80,000 acres.

70,895 acres permanently protected
as of 2023
89% of base goal



LAND PRESERVATION PROGRAMS

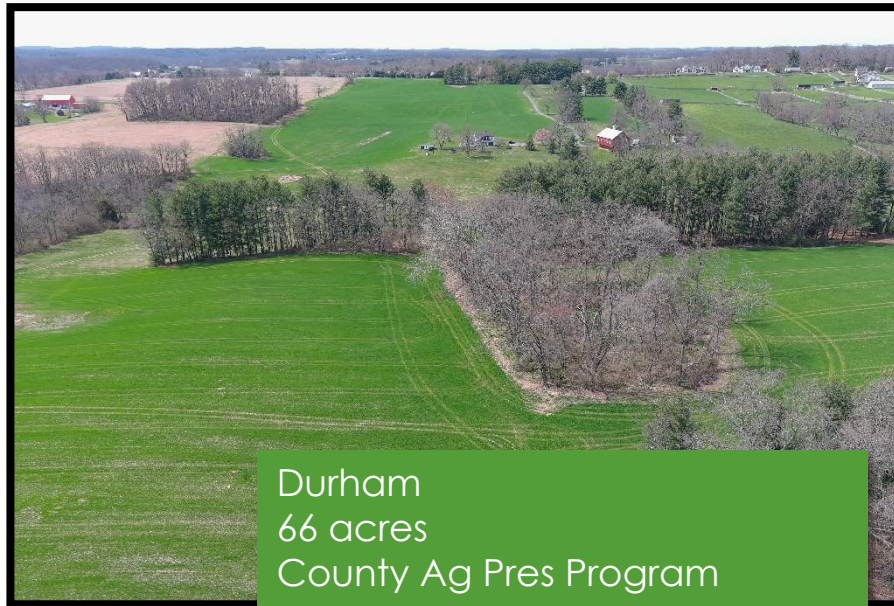


Project List: Completed and Active Projects

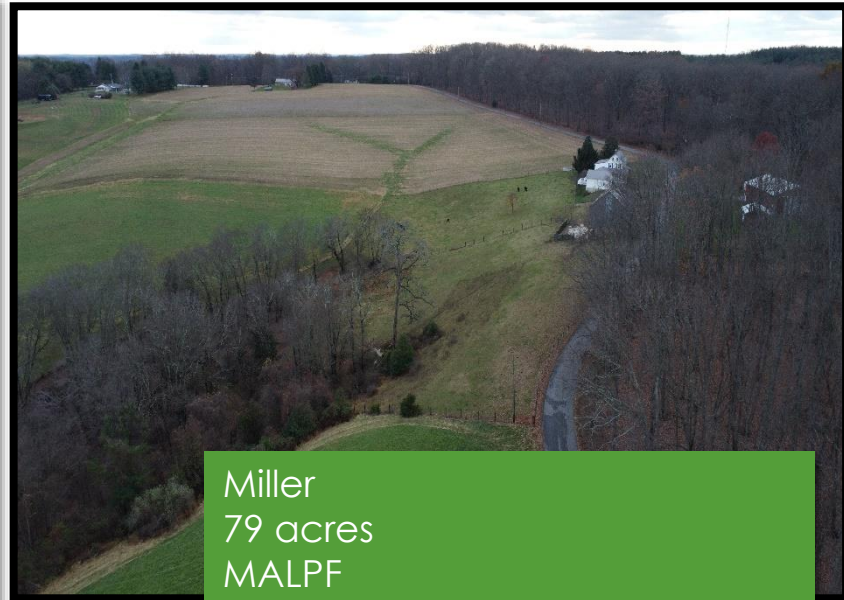
Project #	Project Title & Description	Status	Expenditures to Date	Budgeted
217P001-MALPF	Miller, hay/cattle, 79 ac	Complete	223,573	
217P001-County Ag	Durham, corn/soy, 65 ac	Complete	423,989	
217P002-County RL	Trupe, crop/pasture, 141 ac	Complete	520,449	
217P001-MALPF	Estheric, Inc, dairy, 199 ac	Active		243,208
217P001-County Ag	Hackler, corn/soy, 29 ac	Active		173,718
217P002-County RL	Turnbull, crop/pasture/woodland, 95 ac	Pending settlement		717,259



Trupe
141 acres
County Rural Legacy



Durham
66 acres
County Ag Pres Program



Miller
79 acres
MALPF



Alexander/Winkler
25 acres
MALPF



Project List: Future Projects-Ag Pres & Rural Legacy

Project #	Project Title & Description	Status	FY 2025	FY 2026	FY 2027	FY 2028	FY 2029	FY 2030
217P001	MALPF – easements on farms/woodlands	Future		4 m		4 m		4 m
	County Ag Pres	Future		1.9 m		1.5 m		1.5 m
217P002	County Rural Legacy-easements	Future		500 k		900 k		900 k
	Baltimore County Land Trust Alliance	Future		60 k		60 k		60 k



Focus infrastructure inside the URDL

Protection of reservoirs and streams

Sustainability Benefits of Land Preservation

Maintaining crop land for local food production

Protect large blocks of forest for carbon storage



Equity Review: How underserved and vulnerable populations are incorporated into the agency's decision making process for providing equity in the capital program.

