



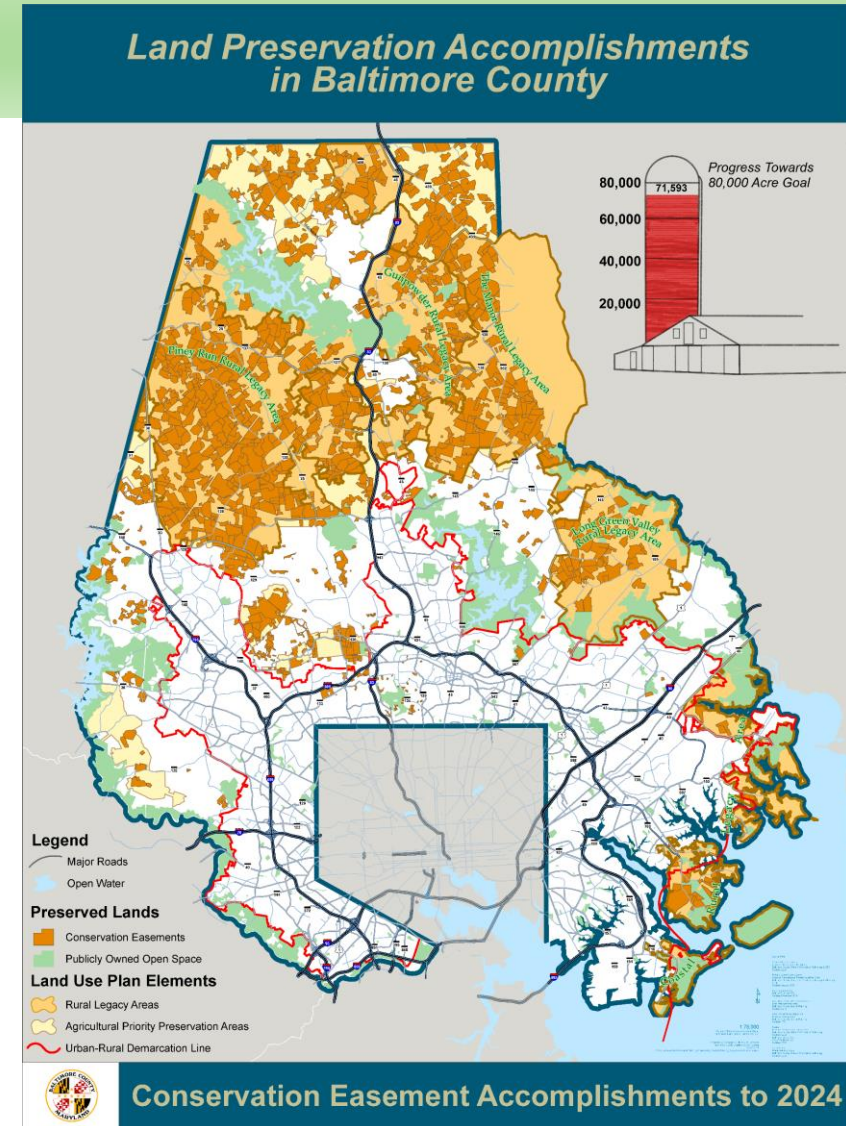
Baltimore County Planning Board
Capital Improvement Program
Land Preservation FY25
January 23, 2025



Land Preservation Goals

Goal 1, Action 1: Increase the number of preserved acres through sustained financial support for conservation easements and agricultural land preservation programs, prioritizing protection of continuous tracts of farmland in Agricultural Priority Preservation Areas and Rural Legacy Areas.

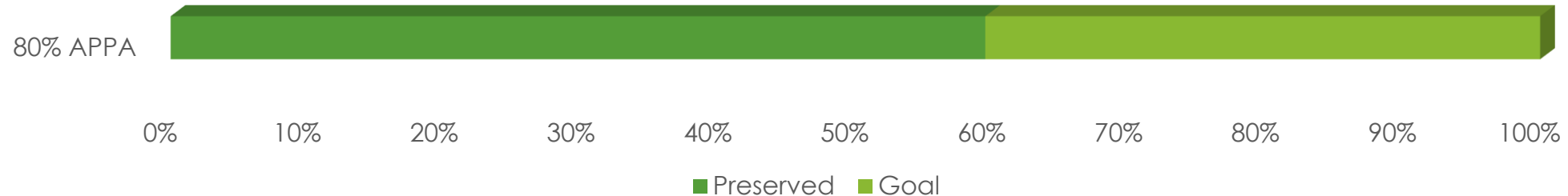
71,593 acres
permanently protected as of 2024



Land Preservation Goals

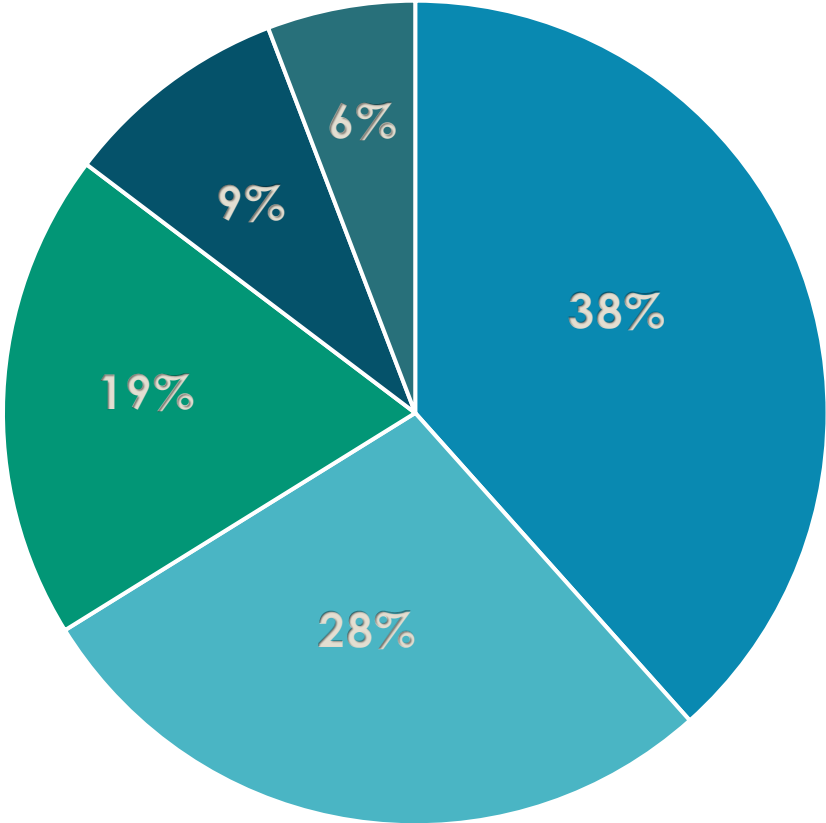
Goal 1, Action 11: Protect at least 80% of the prime agricultural and forestlands within the County's Agricultural Priority Preservation Area.

59.5% of prime agricultural and forestlands in APPA protected



LAND PRESERVATION PROGRAMS

Proportion of Acres Protected by Program



■ MALPF ■ MET & LLTS ■ RURAL LEGACY ■ COUNTY AG ■ RC4, RC 6

Project List: Completed and Active Projects

Project #	Project Title & Description	Status	Expenditures to Date	Budgeted
217P001-MALPF	Alexander, corn/soy, 50 ac	Complete	140,140	
217P001-County Ag	Hackler, corn/soy, 29 ac	Complete	174,834	
217P002-County RL	Turnbull, crop/pasture/woodland, 95 ac	Complete	717,259	
217P001-MALPF	Clear Meadow, corn/soy, 101 ac	Active		199,068
217P001-County Ag	3 applications, 251 acres	Active		1,000,000
217P002-County RL	Sammons, crop/pasture/woodland, 35 ac	Active		259,290



Turnbull
95 acres
County Rural Legacy



Hackler
29 acres
County Ag Pres Program



Richardson
70 acres
MALPF



Alexander
50 acres
MALPF

Project List: Future Projects-Ag Pres & Rural Legacy

Project #	Project Title & Description	Status	FY 2025	FY 2026	FY 2027	FY 2028	FY 2029	FY 2030
217P001	MALPF – easements on farms/woodlands	Future		4 m		4 m		4 m
	County Ag Pres	Future		1.5 m		1.5 m		1.5 m
217P002	County Rural Legacy-easements	Future		500 k		900 k		900 k
	Baltimore County Land Trust Alliance	Future		60 k		60 k		60 k



Focus infrastructure inside the URDL

Protection of reservoirs and streams

Sustainability Benefits of Land Preservation

Maintaining crop land for local food production

Protect large blocks of forest for carbon storage



Equity Review: How underserved and vulnerable populations are incorporated into the agency's decision making process for providing equity in the capital program.

