

Map Location

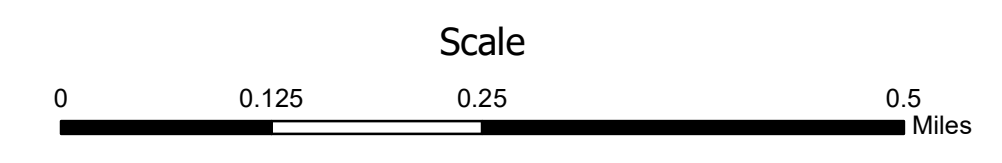
Map ANE

Legend

- SSO Event (01/01/23 to 12/31/23)
Location with Event Reference Number
- Pump Station
- Sewer Manhole
- Cleanout
- Inline Cleanout
- Lamp Hole
- Sewer Service Areas
- Building Footprint
- County Boundary
- Stream

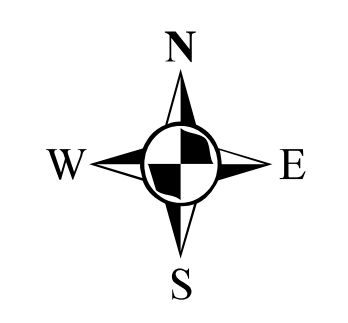
Note:
For information on SSO Events -
See SSO data included with
this annual report.

Coordinate System:
Maryland State Plane: NAD83/HARN
Scale of Data Capture: 1" = 200'

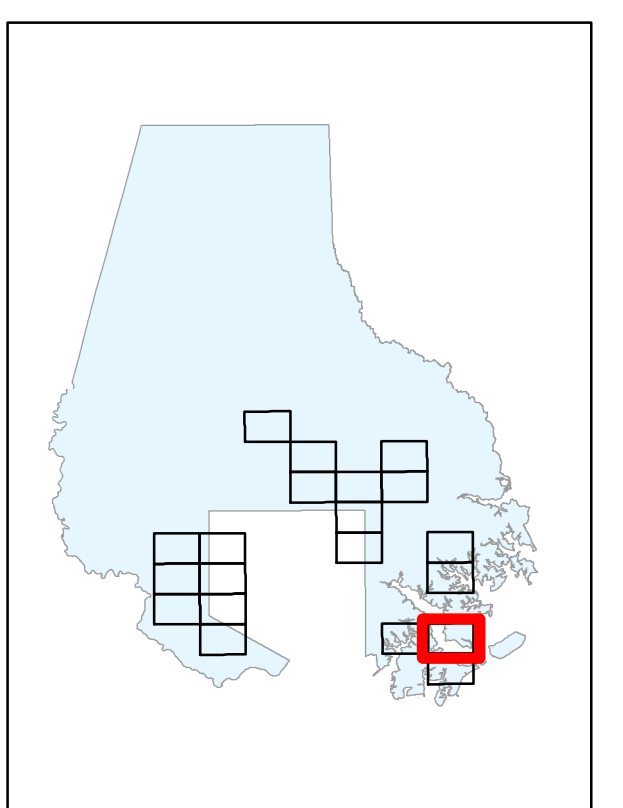
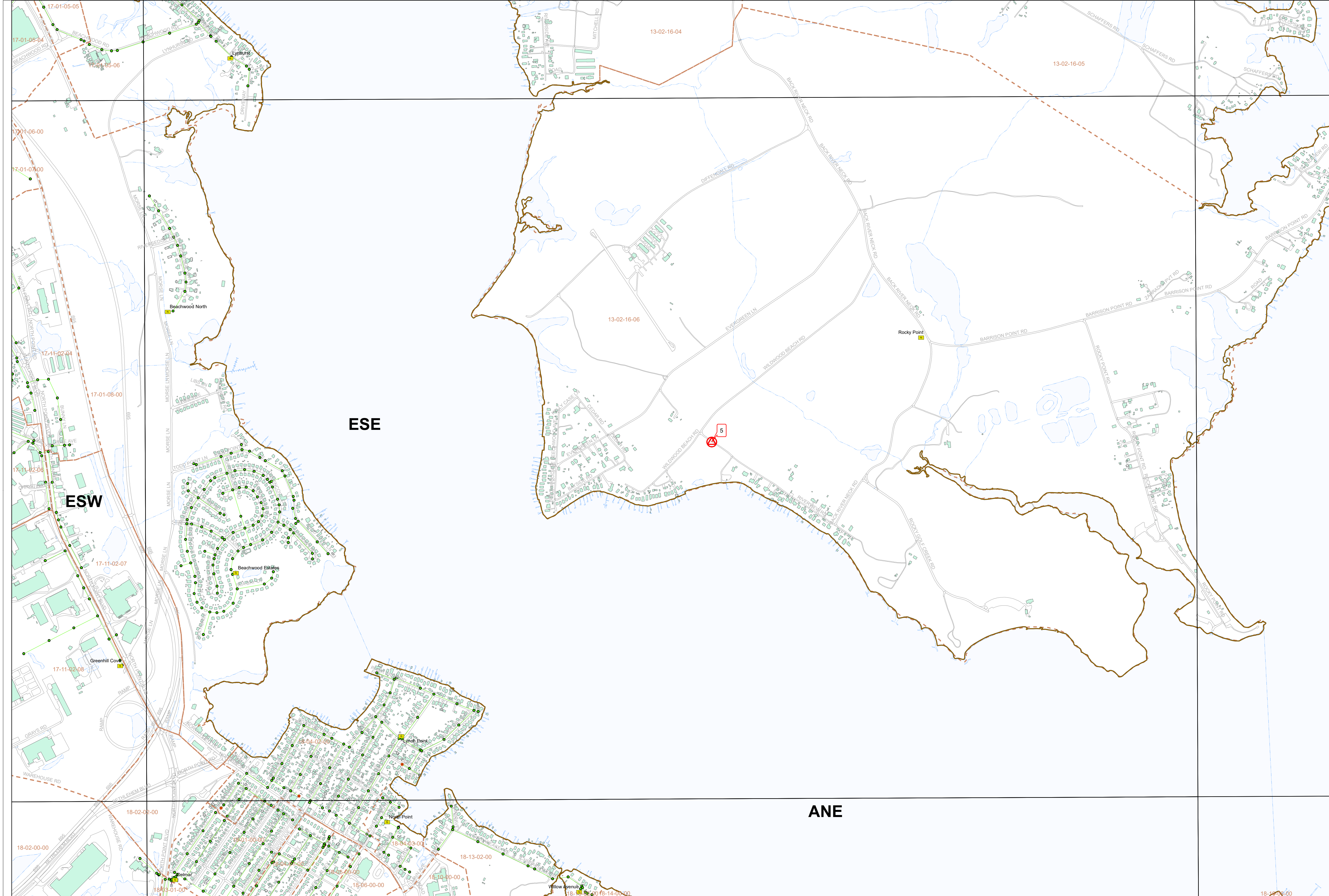


Sanitary Sewer Overflow Events - Annual Report for 2023

Baltimore County, Maryland



Baltimore County, Maryland
Department of Public Works
and Transportation
Map Production Date: February 2024



Map Location

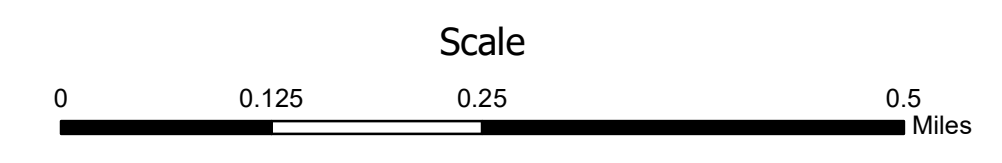
Map ESE

Legend

- # SSO Event (01/01/23 to 12/31/23)
Location with Event Reference Number
- Pump Station
- Sewer Manhole
- ★ Cleanout
- ★ In-line Cleanout
- Lamp Hole
- ▭ Sewer Service Areas
- Building Footprint
- ▭ County Boundary
- Stream

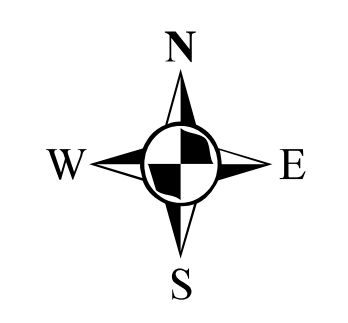
Note:
For information on SSO Events -
See SSO data included with
this annual report.

Coordinate System:
Maryland State Plane: NAD83/HARN
Scale of Data Capture: 1" = 200'

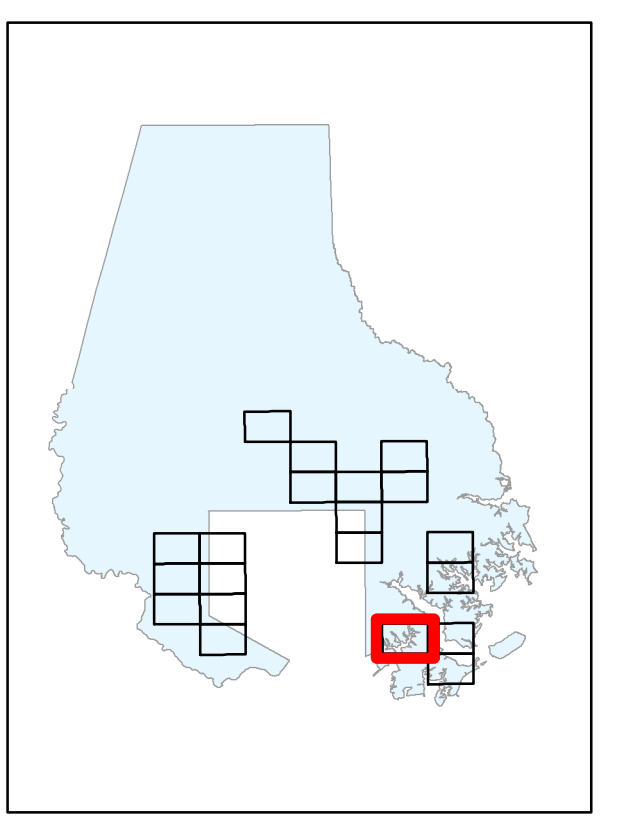
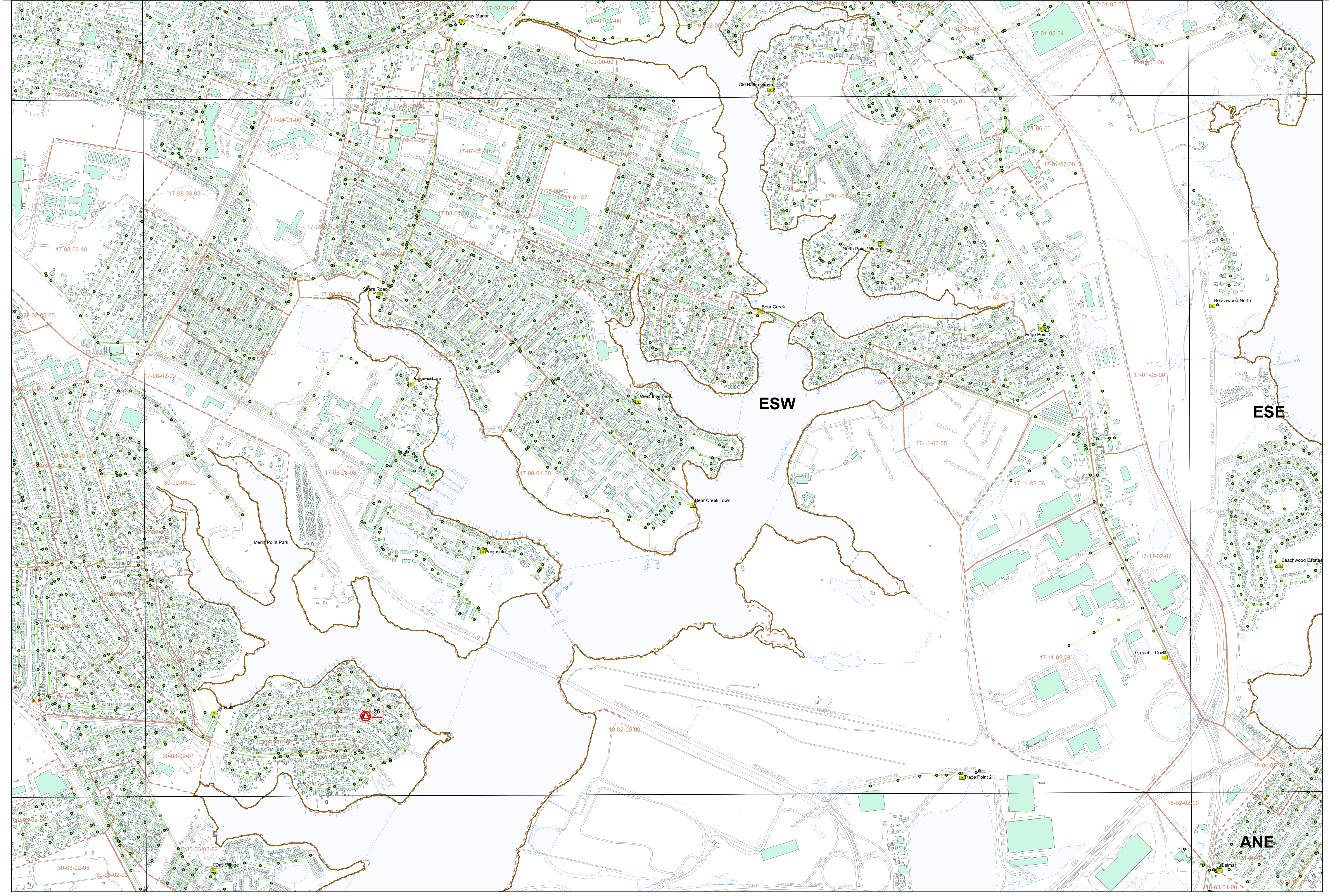


Sanitary Sewer Overflow Events - Annual Report for 2023

Baltimore County, Maryland



Baltimore County, Maryland
Department of Public Works
and Transportation
Map Production Date: February 2024



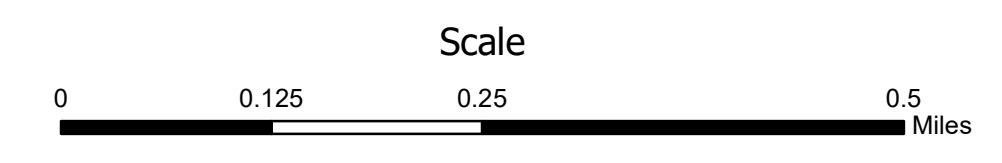
Map Location

Map ESW

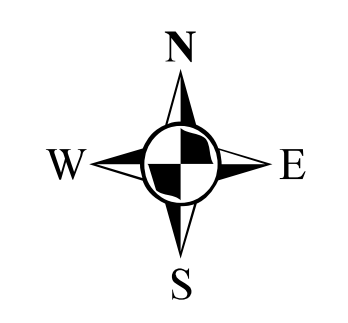
- Legend**
- # SSO Event (01/01/23 to 12/31/23)
Location with Event Reference Number
 - Pump Station
 - Sewer Manhole
 - ★ Cleanout
 - ⬮ Inline Cleanout
 - ⬮ Lamp Hole
 - ▭ Sewer Service Areas
 - Building Footprint
 - ▭ County Boundary
 - Stream

Note:
For information on SSO Events -
See SSO data included with
this annual report.

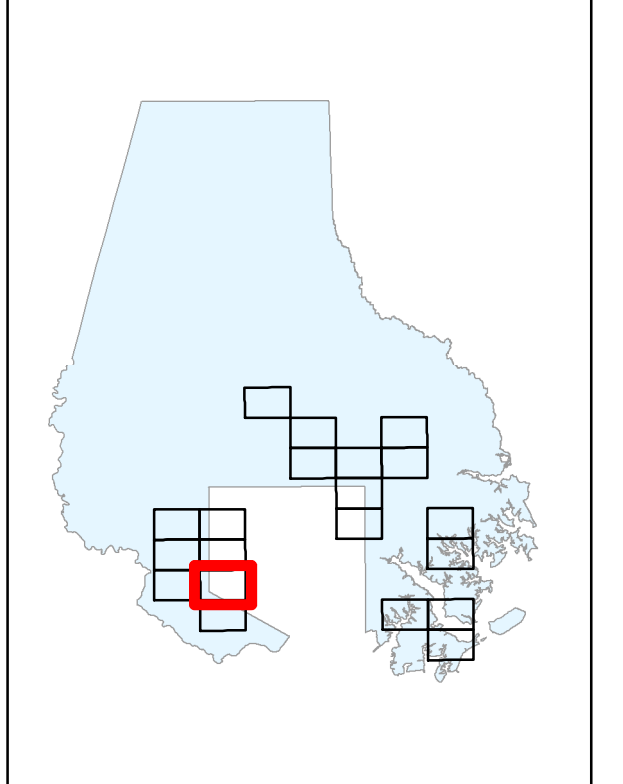
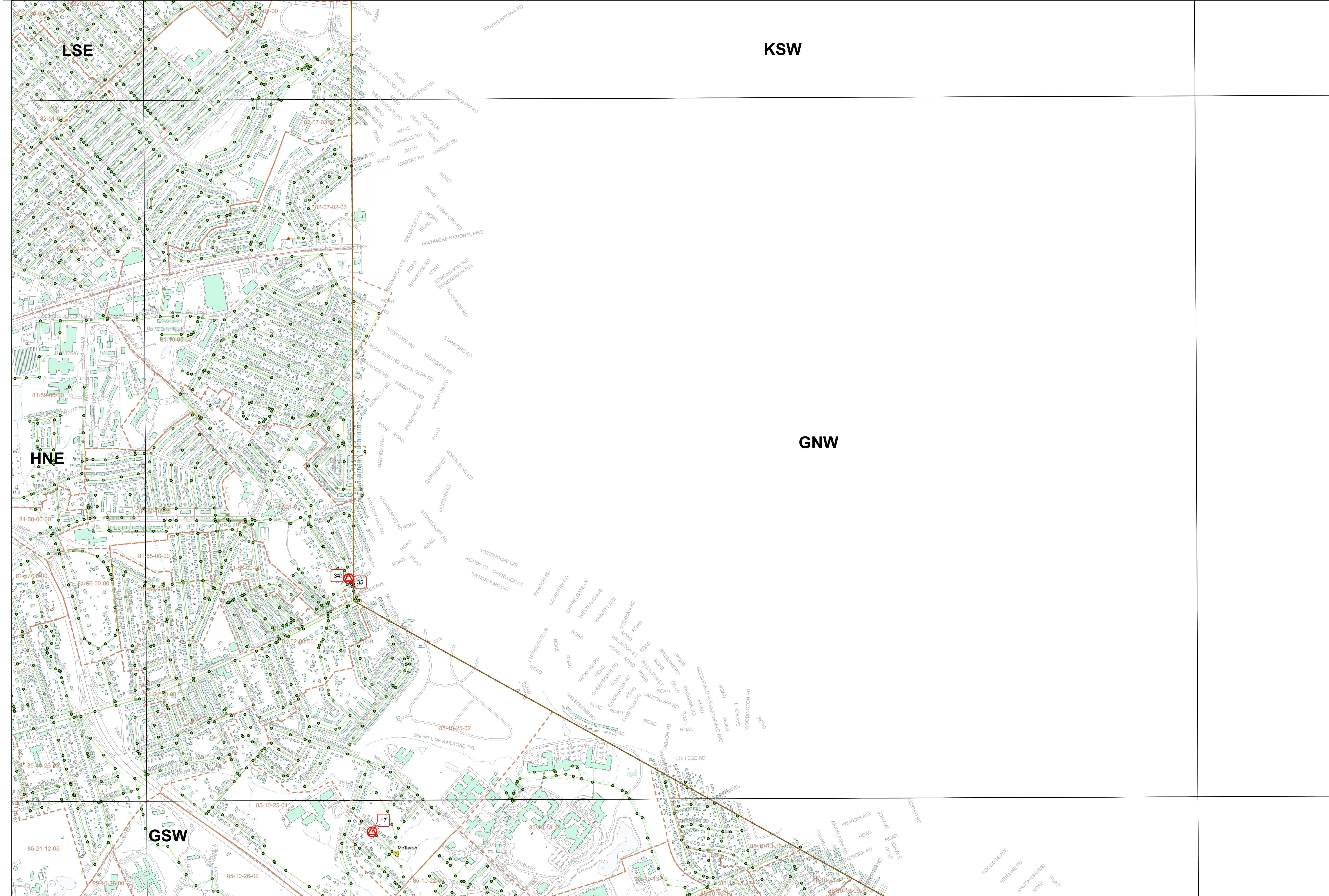
Coordinate System:
Maryland State Plane: NAD83/HARN
Scale of Data Capture: 1" = 200'



Sanitary Sewer Overflow Events - Annual Report for 2023 Baltimore County, Maryland



Baltimore County, Maryland
Department of Public Works
and Transportation
Map Production Date: February 2024



Map Location

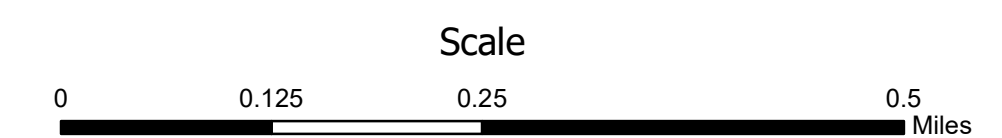
Map GNW

Legend

- # SSO Event (01/01/23 to 12/31/23)
Location with Event Reference Number
- Pump Station
- Sewer Manhole
- Cleanout
- Inline Cleanout
- Lamp Hole
- Sewer Service Areas
- Building Footprint
- County Boundary
- Stream

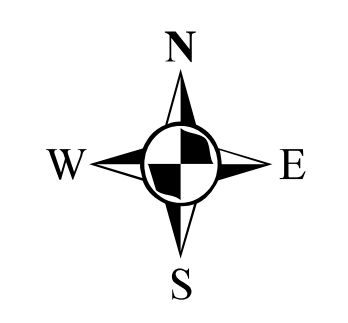
Note:
For information on SSO Events -
See SSO data included with
this annual report.

Coordinate System:
Maryland State Plane: NAD83/HARN
Scale of Data Capture: 1" = 200'

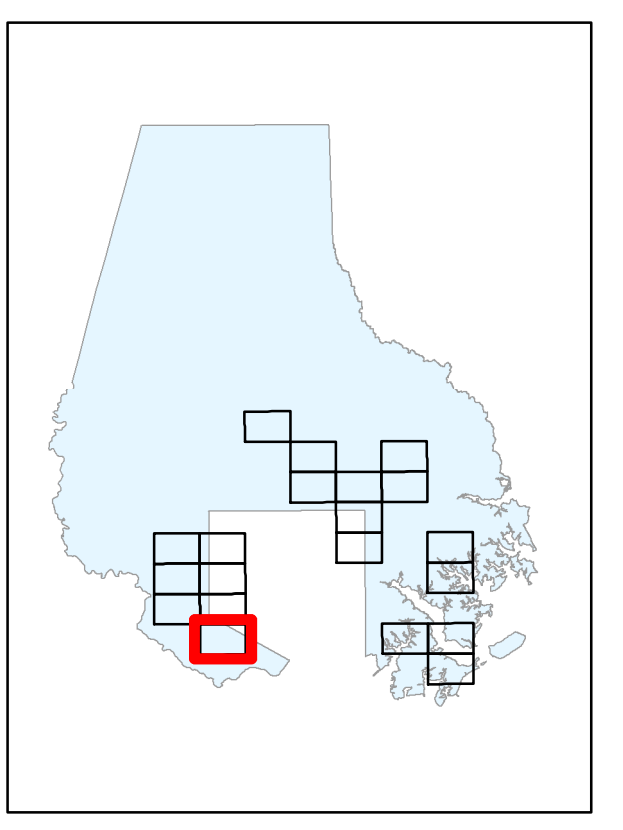
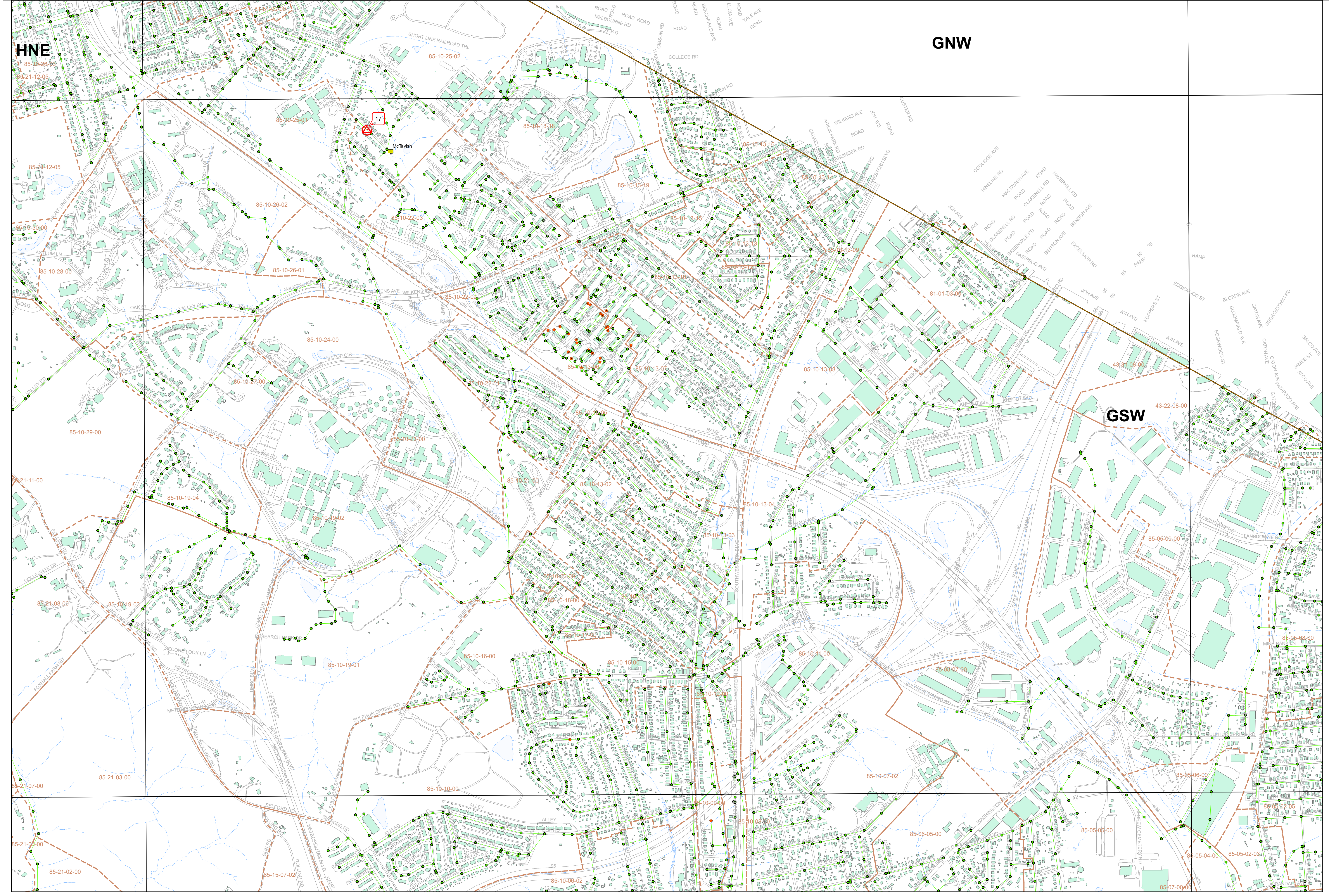


Sanitary Sewer Overflow Events - Annual Report for 2023

Baltimore County, Maryland



Baltimore County, Maryland
Department of Public Works
and Transportation
Map Production Date: February 2024



Map Location

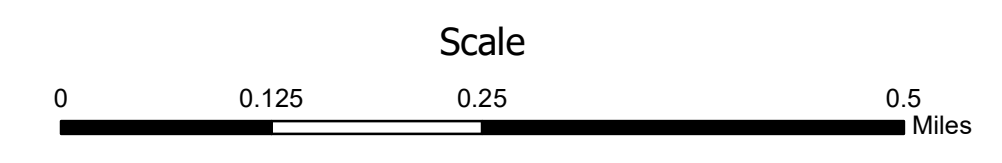
Map GSW

Legend

- # Location with Event Reference Number
- 🚰 Sewer Manhole
- 🧹 Cleanout
- 🔧 In-line Cleanout
- 🕯️ Lamp Hole
- 📐 Sewer Service Areas
- 🏠 Building Footprint
- 🗺️ County Boundary
- 🌊 Stream

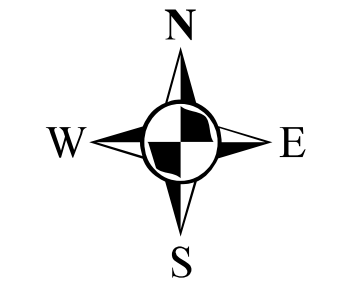
Note:
For information on SSO Events -
See SSO data included with
this annual report.

Coordinate System:
Maryland State Plane: NAD83/HARN
Scale of Data Capture: 1" = 200'



Sanitary Sewer Overflow Events - Annual Report for 2023

Baltimore County, Maryland



Baltimore County, Maryland
Department of Public Works
and Transportation
Map Production Date: February 2024