

Map Location

## Map NNW

### Legend

- # Location with Event Reference Number
- Pump Station
- Sewer Manhole
- ▲ Cleanout
- ◆ In-line Cleanout
- Lamp Hole
- ▭ Sewer Service Areas
- Building Footprint
- ▭ County Boundary
- Stream

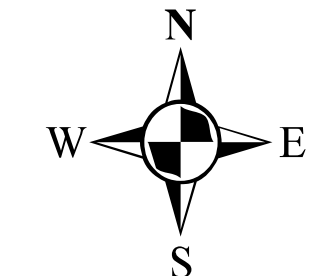
Note:  
For information on SSO Events -  
See SSO data included with  
this annual report.

Coordinate System:  
Maryland State Plane: NAD83/HARN  
Scale of Data Capture: 1" = 200'

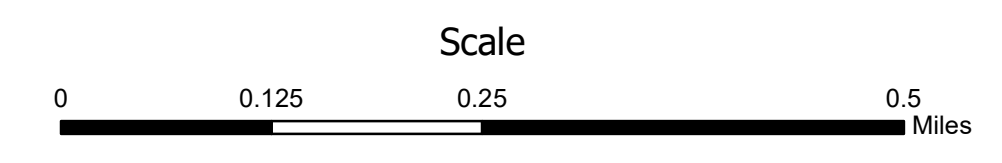


# Sanitary Sewer Overflow Events - Annual Report for 2023

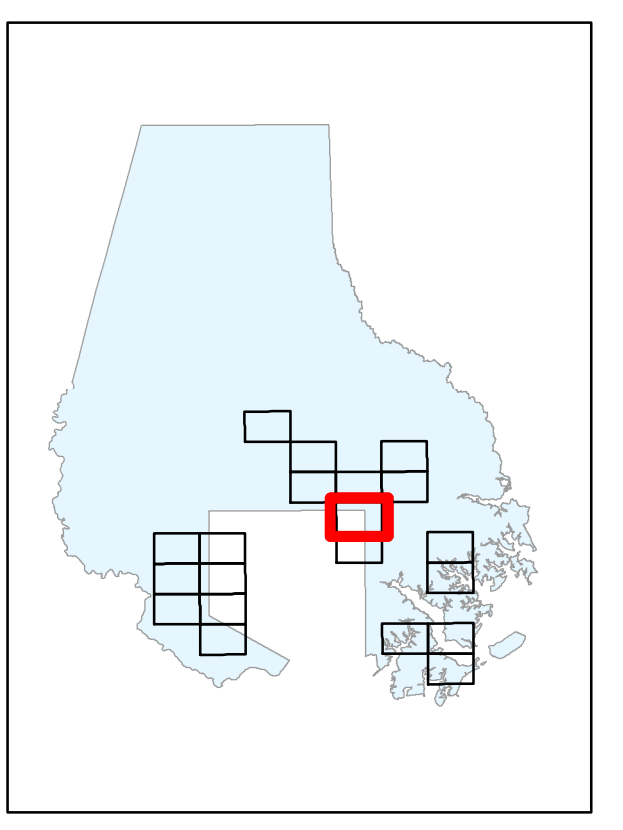
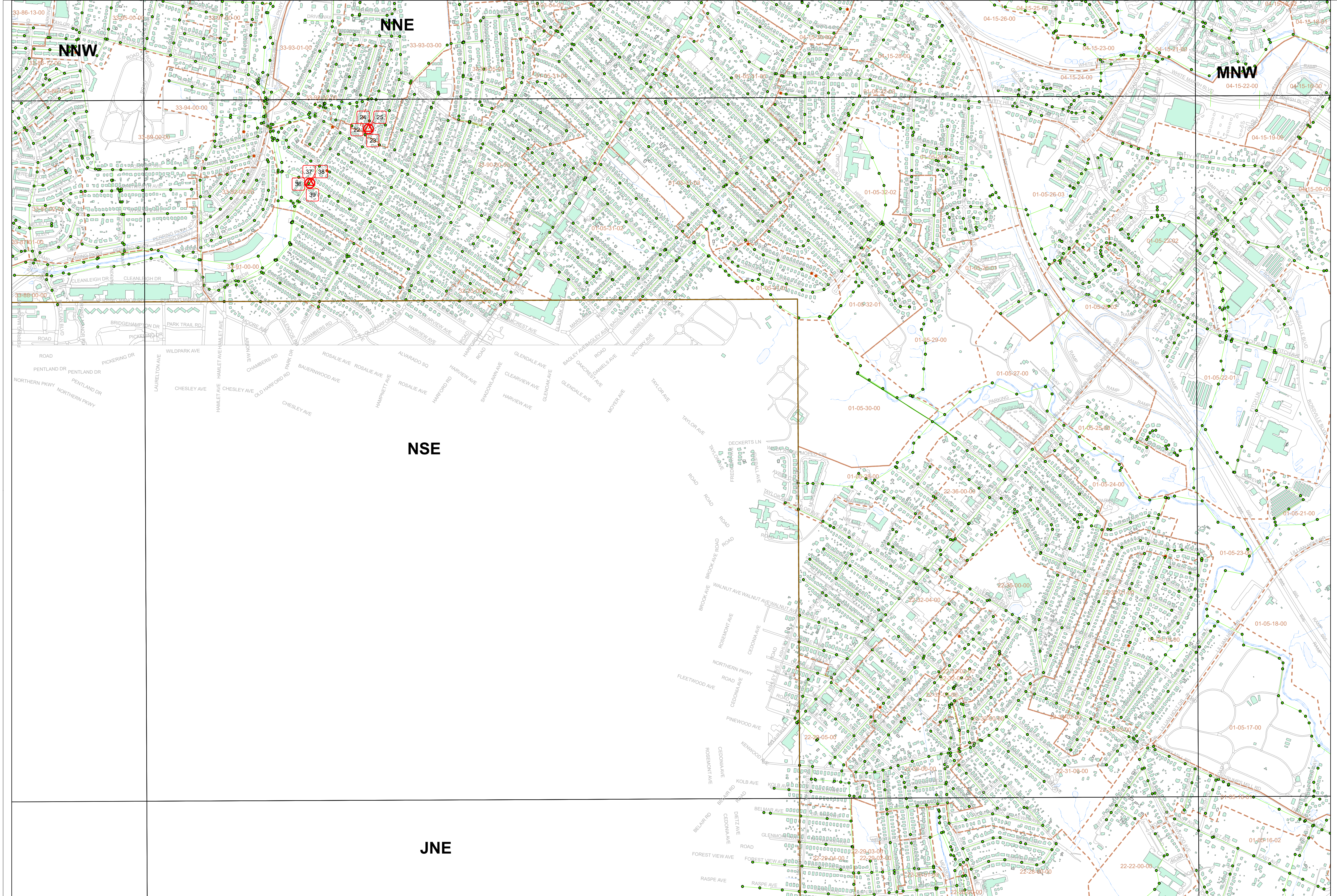
## Baltimore County, Maryland



Baltimore County, Maryland  
Department of Public Works  
and Transportation  
Map Production Date: February 2024







Map Location

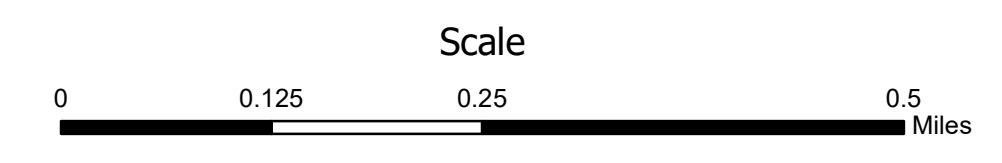
# Map NSE

**Legend**

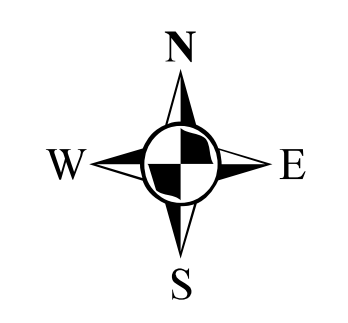
- # SSO Event (01/01/23 to 12/31/23)  
Location with Event Reference Number
- Pump Station
- Sewer Manhole
- Cleanout
- Inline Cleanout
- Lamp Hole
- - - Sewer Service Areas
- Building Footprint
- ▭ County Boundary
- Stream

Note:  
For information on SSO Events -  
See SSO data included with  
this annual report.

Coordinate System:  
Maryland State Plane: NAD83/HARN  
Scale of Data Capture: 1" = 200'

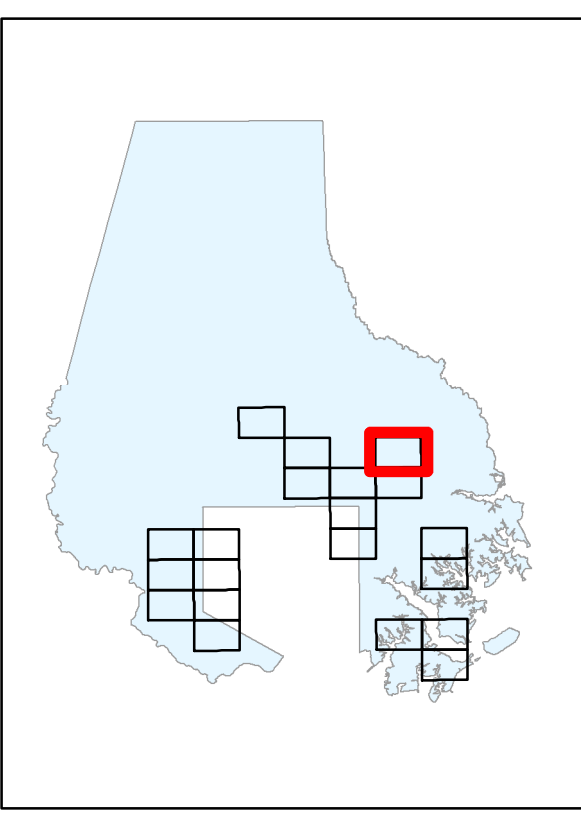


## Sanitary Sewer Overflow Events - Annual Report for 2023 Baltimore County, Maryland



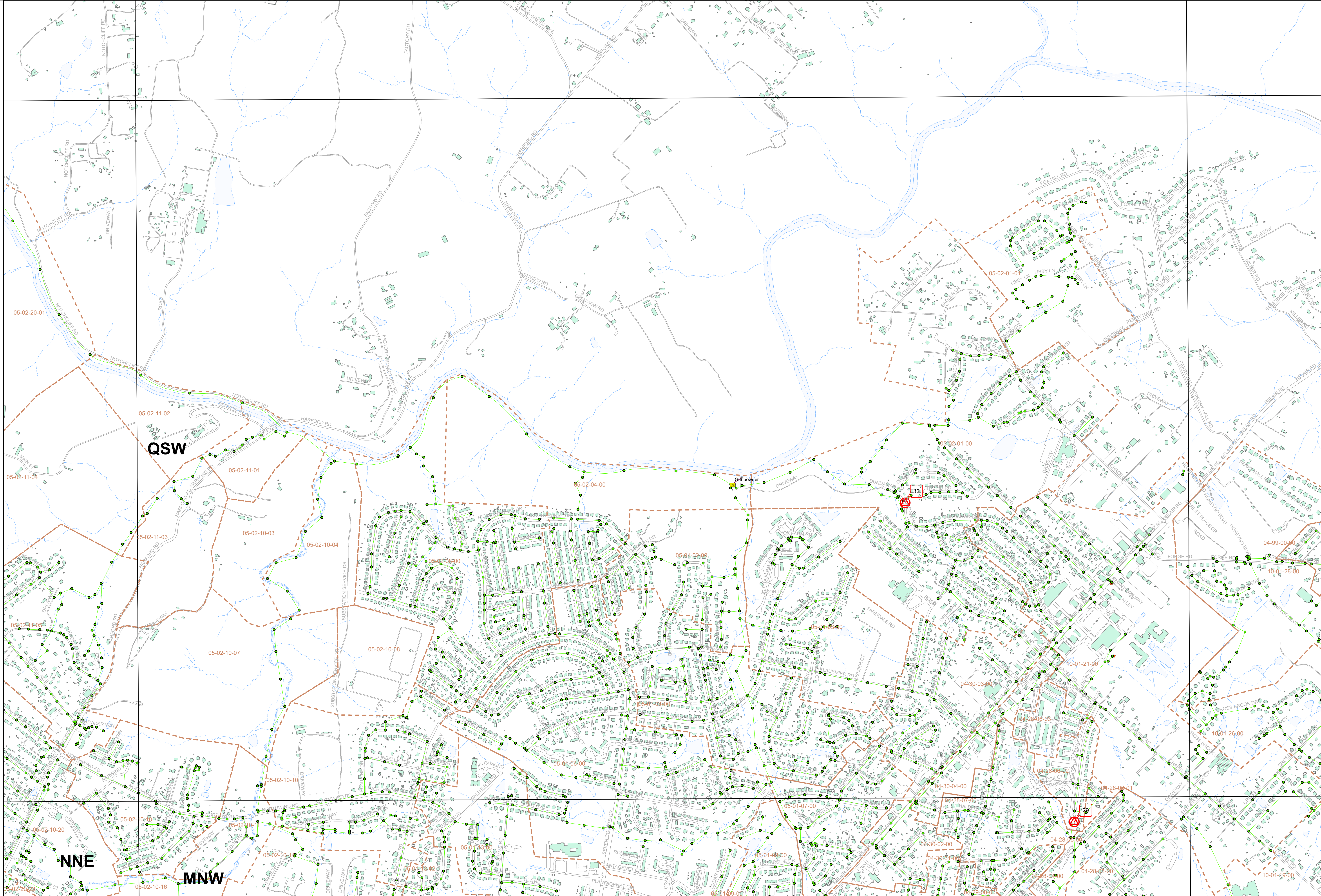
Baltimore County, Maryland  
Department of Public Works  
and Transportation  
Map Production Date: February 2024





Map Location

# Map QSW

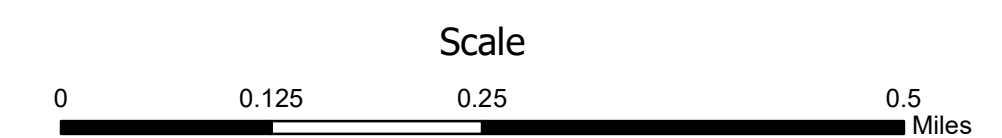


**Legend**

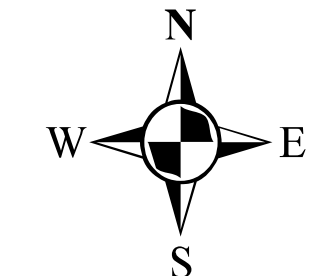
- # SSO Event (01/01/23 to 12/31/23) Location with Event Reference Number
- Pump Station
- Sewer Manhole
- Cleanout
- Inline Cleanout
- Lamp Hole
- Sewer Service Areas
- Building Footprint
- County Boundary
- Stream

Note:  
For information on SSO Events -  
See SSO data included with  
this annual report.

Coordinate System:  
Maryland State Plane: NAD83/HARN  
Scale of Data Capture: 1" = 200'

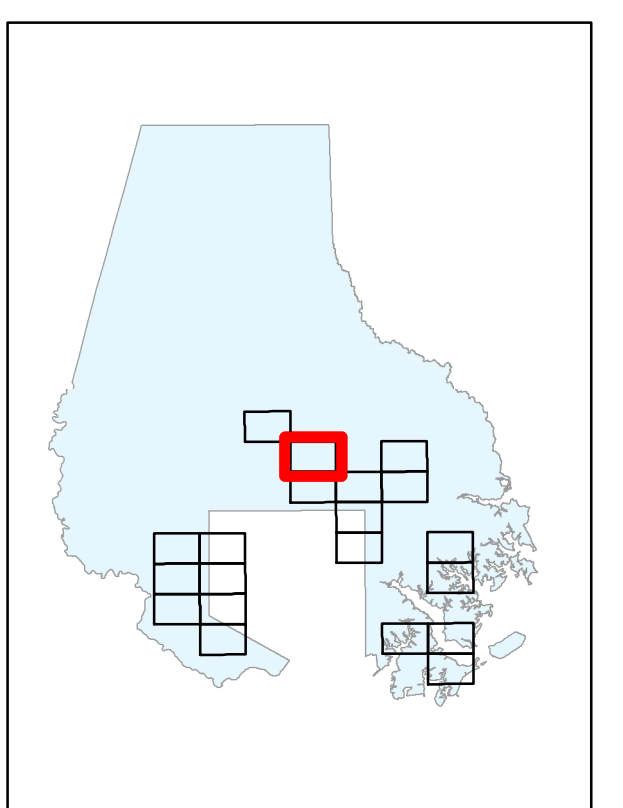
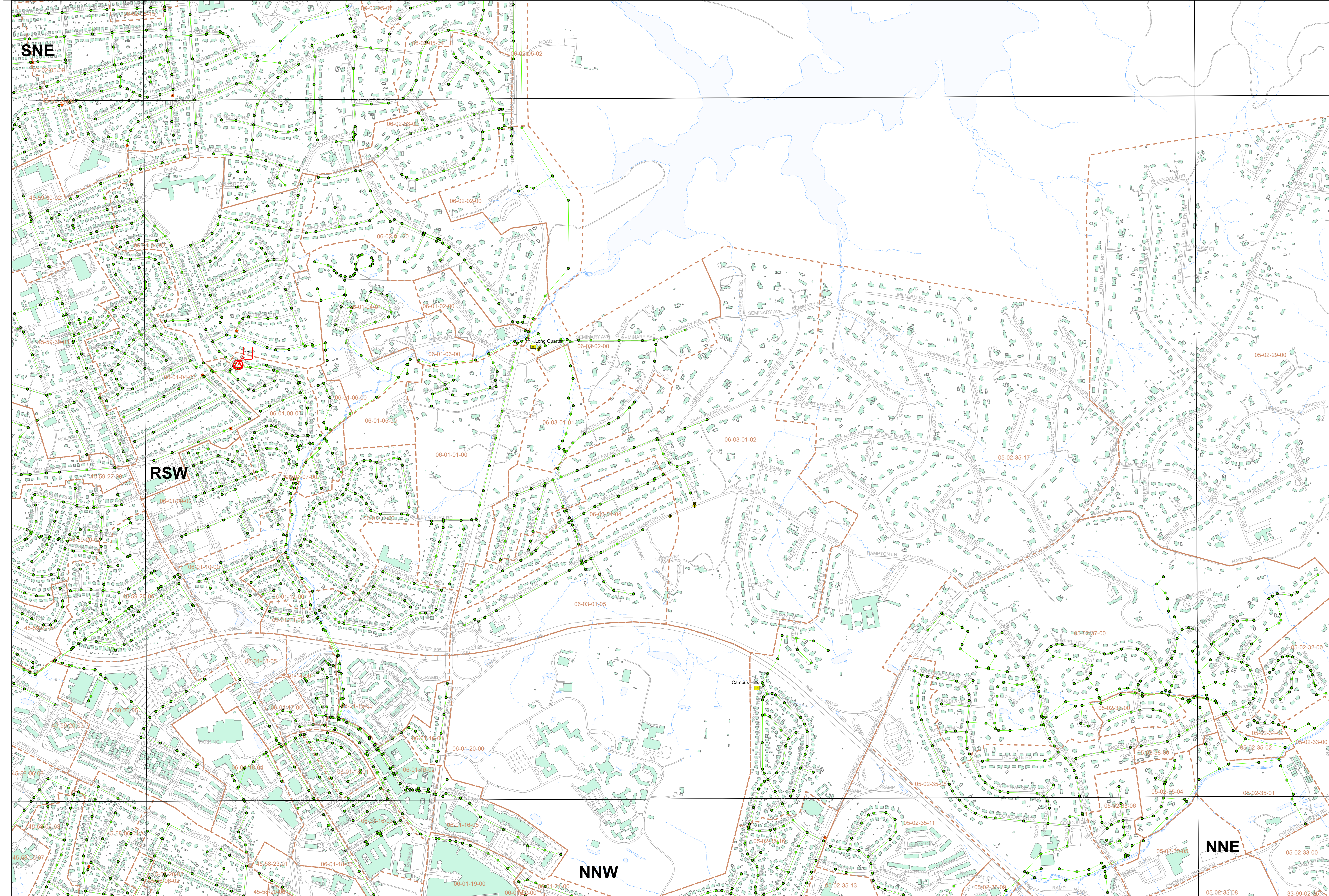


## Sanitary Sewer Overflow Events - Annual Report for 2023 Baltimore County, Maryland



Baltimore County, Maryland  
Department of Public Works  
and Transportation  
Map Production Date: February 2024





Map Location

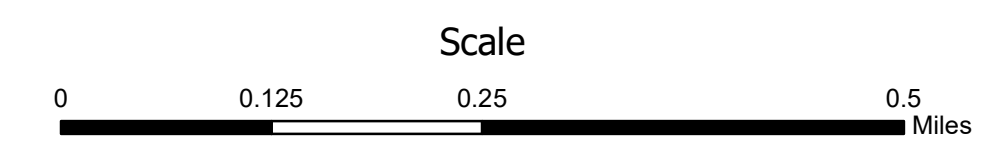
# Map RSW

## Legend

- # Location with Event Reference Number
- Pump Station
- Sewer Manhole
- Cleanout
- Inline Cleanout
- Lamp Hole
- Sewer Service Areas
- Building Footprint
- County Boundary
- Stream

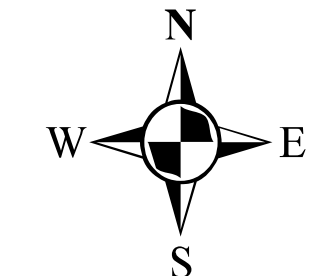
Note:  
For information on SSO Events -  
See SSO data included with  
this annual report.

Coordinate System:  
Maryland State Plane: NAD83/HARN  
Scale of Data Capture: 1" = 200'



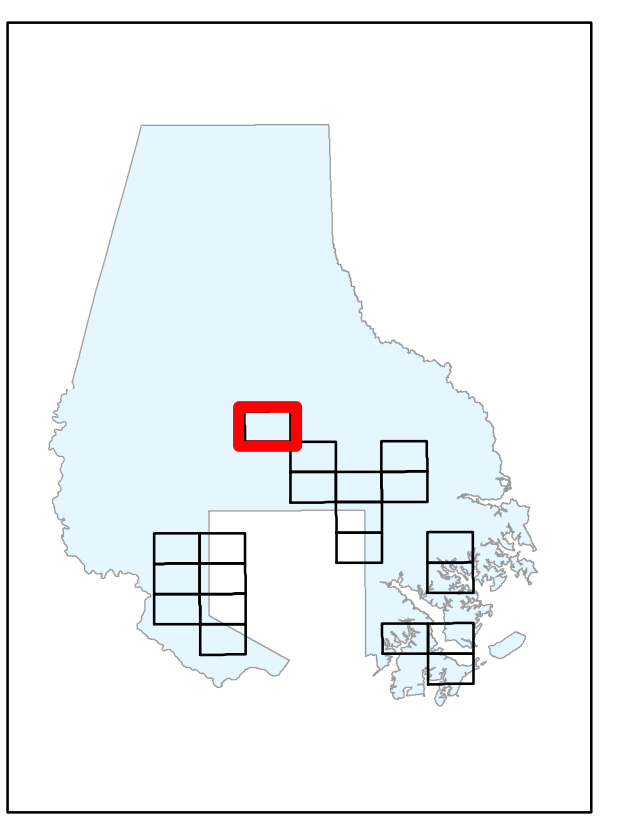
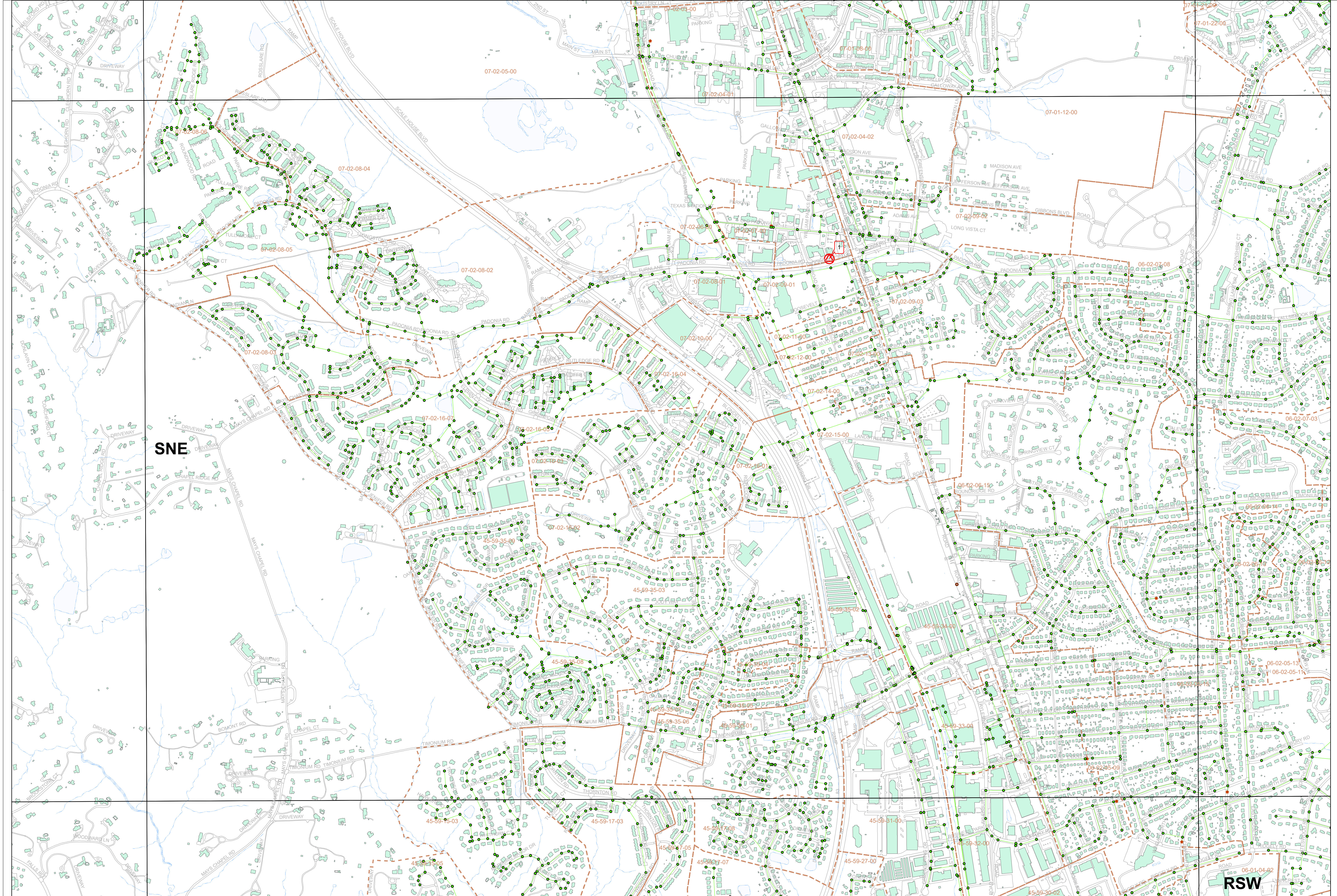
# Sanitary Sewer Overflow Events - Annual Report for 2023

## Baltimore County, Maryland



Baltimore County, Maryland  
Department of Public Works  
and Transportation  
Map Production Date: February 2024





Map Location

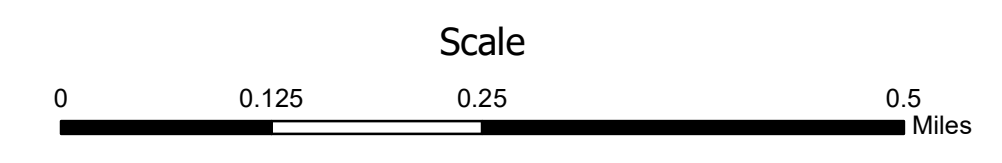
# Map SNE

## Legend

- # SSO Event (01/01/23 to 12/31/23)  
Location with Event Reference Number
- Pump Station
- Sewer Manhole
- Cleanout
- Inline Cleanout
- Lamp Hole
- Sewer Service Areas
- Building Footprint
- County Boundary
- Stream

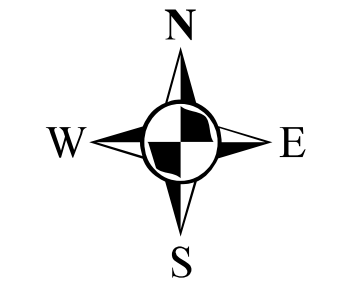
Note:  
For information on SSO Events -  
See SSO data included with  
this annual report.

Coordinate System:  
Maryland State Plane: NAD83/HARN  
Scale of Data Capture: 1" = 200'



# Sanitary Sewer Overflow Events - Annual Report for 2023

## Baltimore County, Maryland



Baltimore County, Maryland  
Department of Public Works  
and Transportation  
Map Production Date: February 2024