

Cromwell Valley Park

Enhancement Project



Cromwell Valley Park

Cromwell Valley Park Improvements

SHERWOOD
HOUSE PROJECT
SITE (BALTIMORE
COUNTY OWNED)

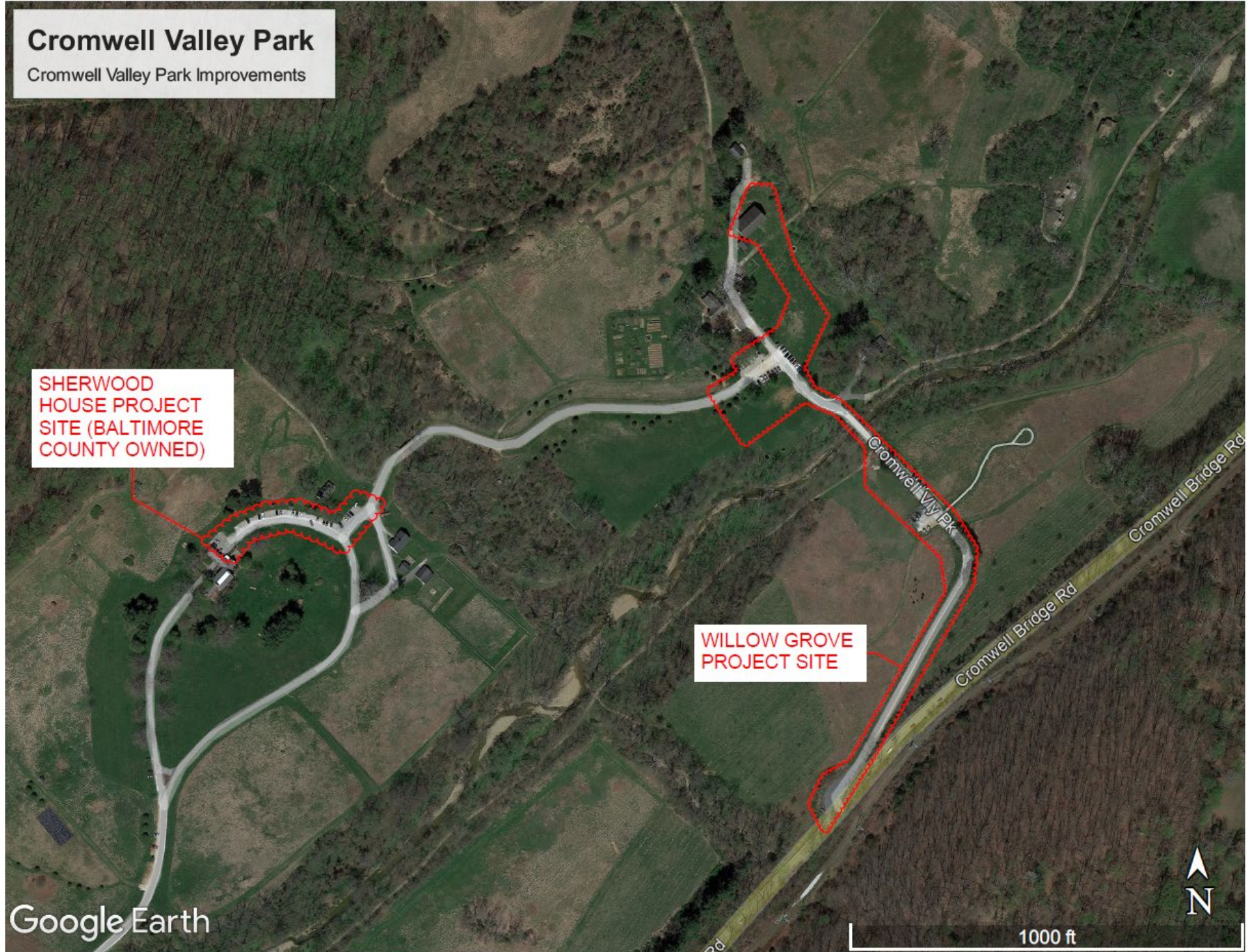
WILLOW GROVE
PROJECT SITE

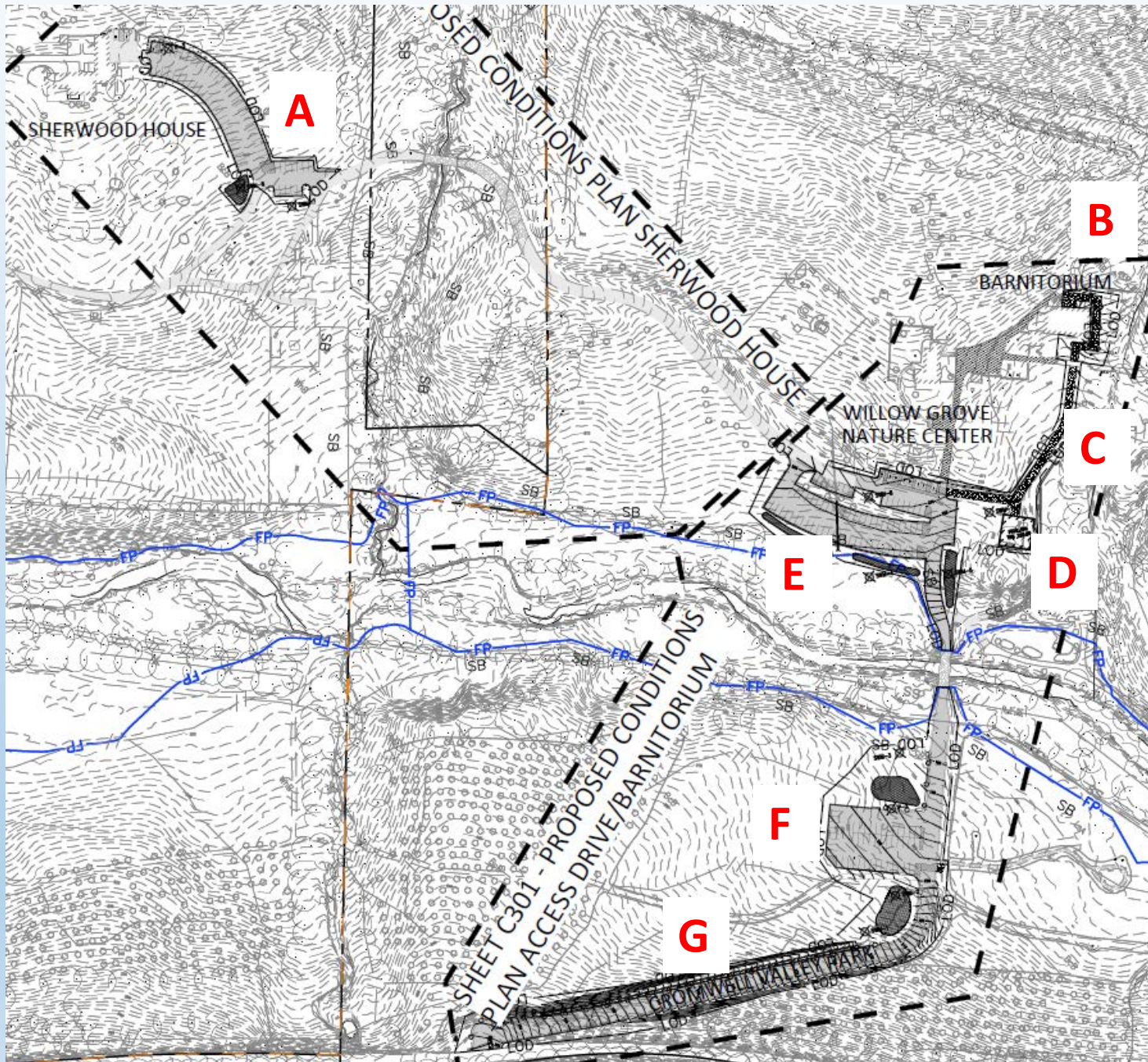
Google Earth

1000 ft



Cromwell Valley Park
Enhancement Project
Areas Of Work (outlined in Red)





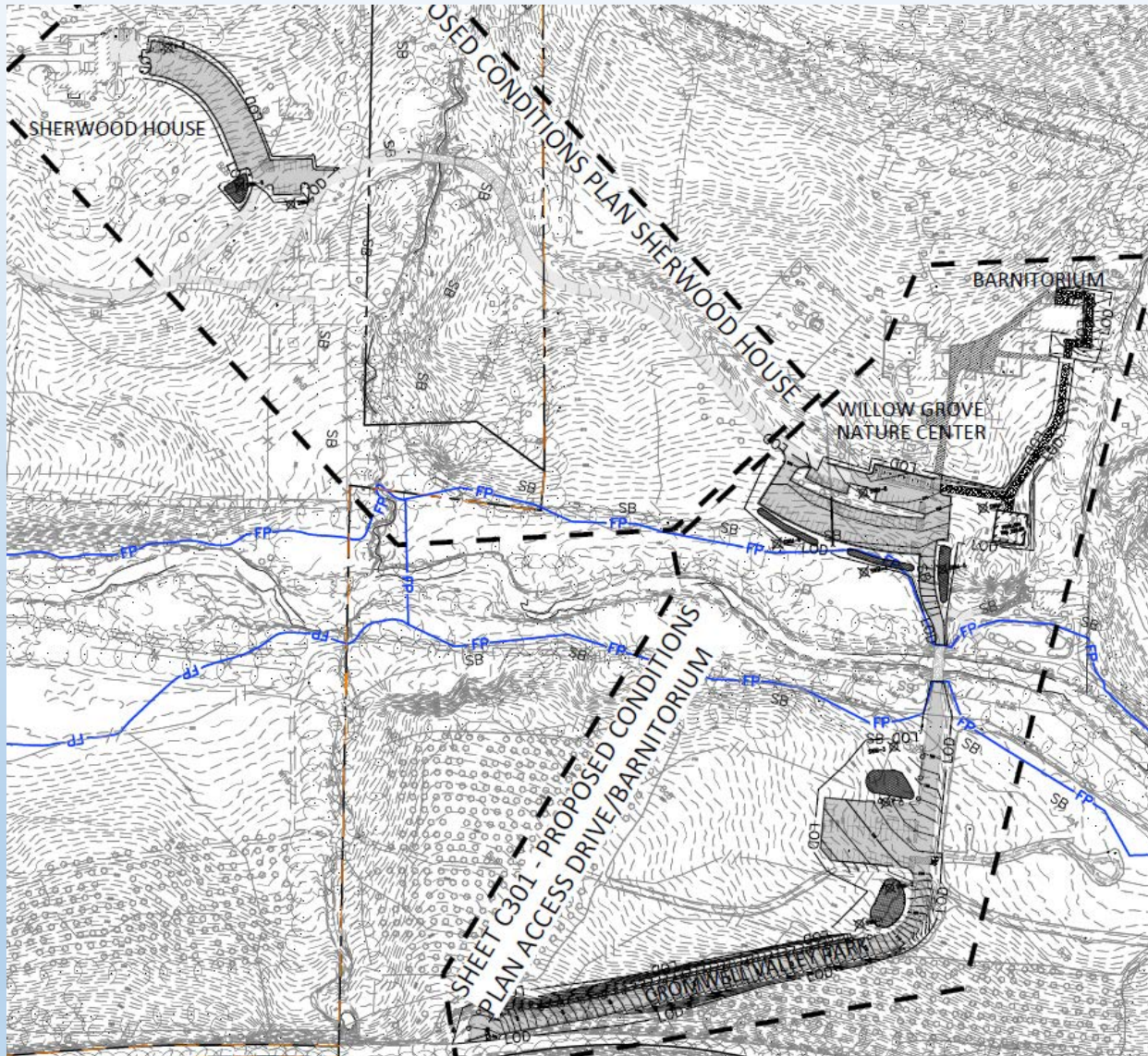
Cromwell Valley Park

Enhancement Project

Scope of Work:

- A. Sherwood House Parking Expansion
- B. Barnitorium Entrance Path Improvements
- C. New Accessible Path Including Interpretive Signage
- D. New Pavilion
- E. Willow Grove Nature Center Parking Expansion
- F. Willow Grove Entrance Parking Expansion
- G. Willow Grove Entrance Road Widening

Cromwell Valley Park Proposed Enhancements Side by Side Overview

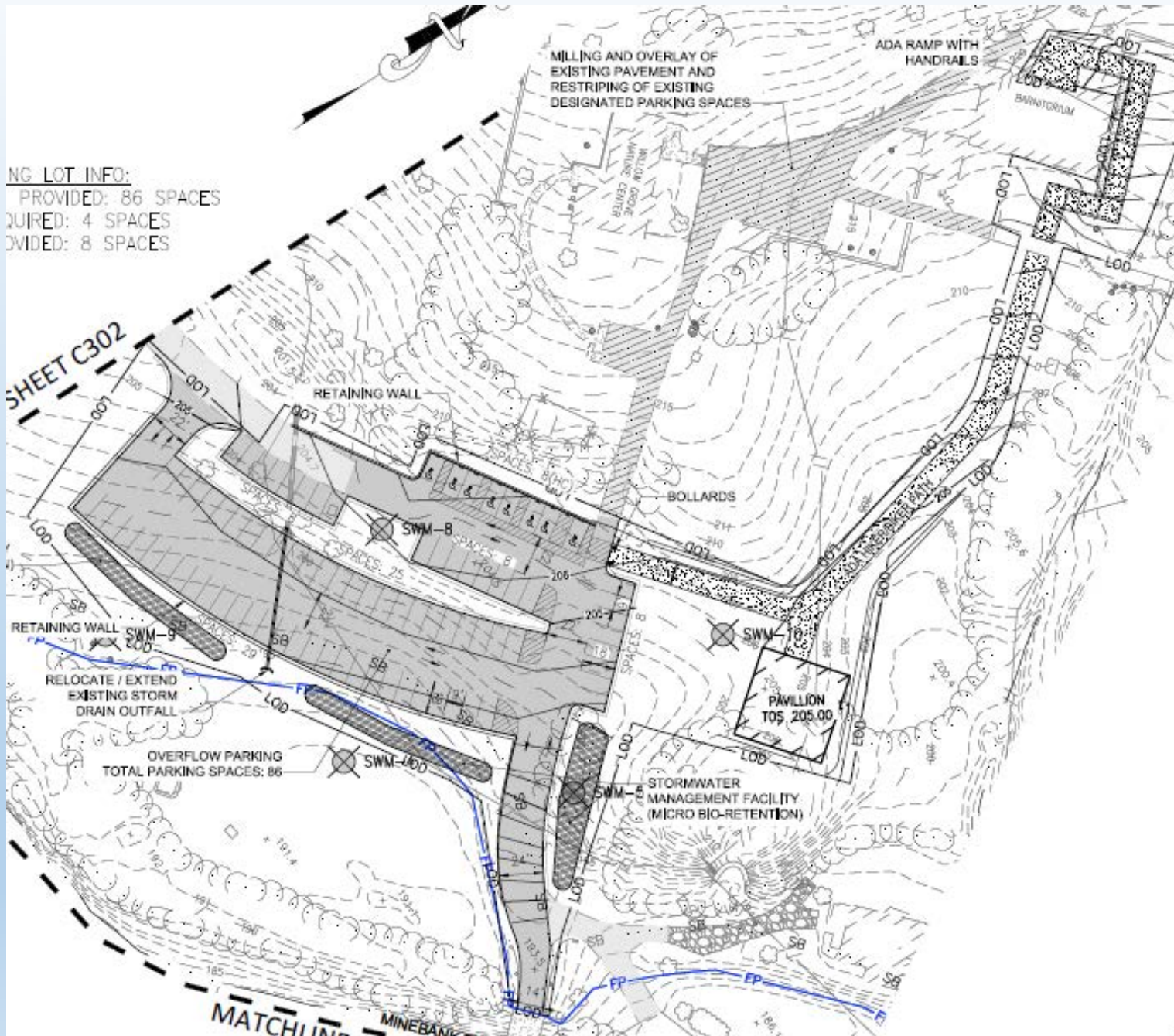


Willow Grove Nature Center Area Proposed Enhancements Overlay



Willow Grove Nature Center Area Proposed Enhancements

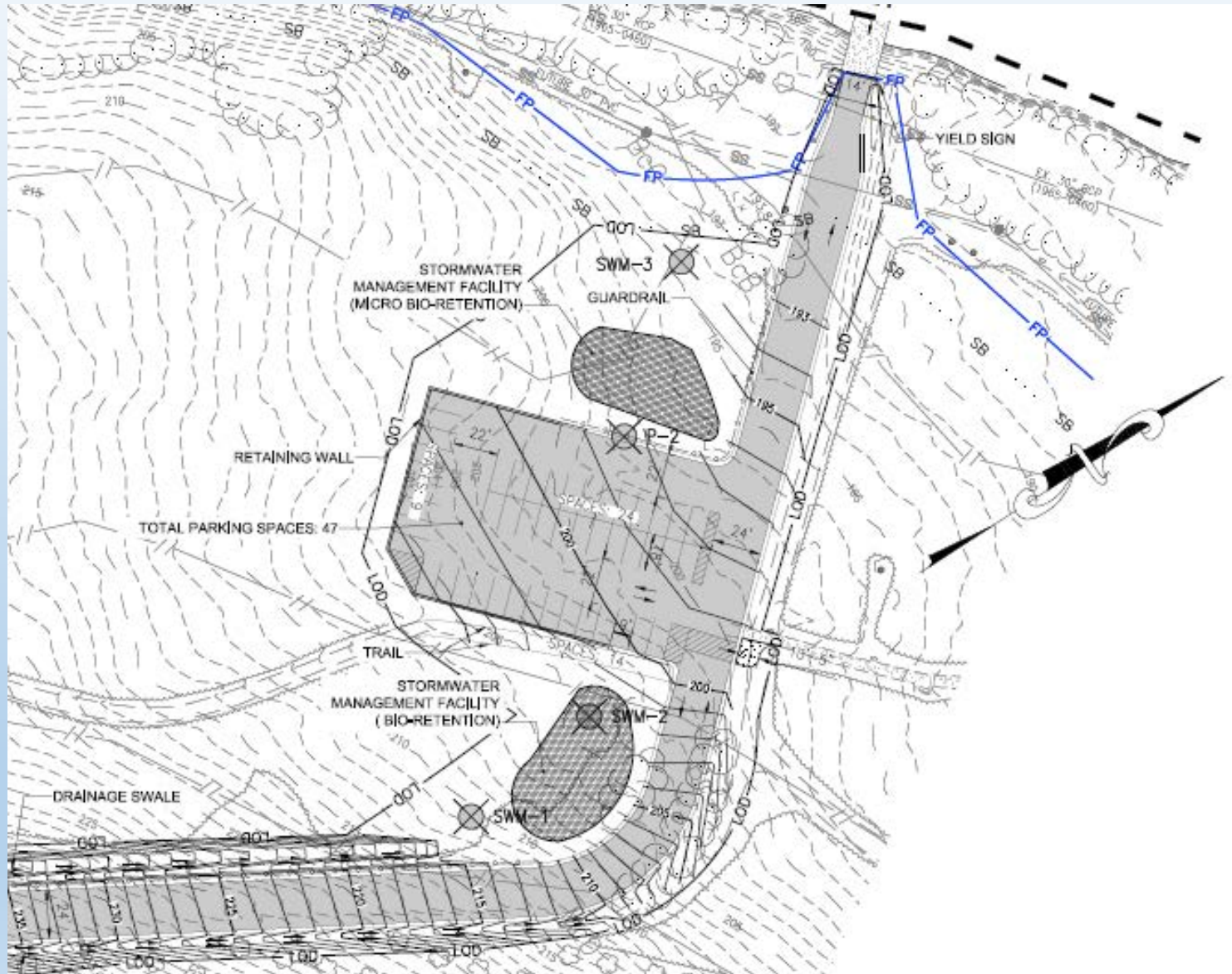
EXISTING LOT INFO:
PROVIDED: 86 SPACES
REQUIRED: 4 SPACES
PROVIDED: 8 SPACES



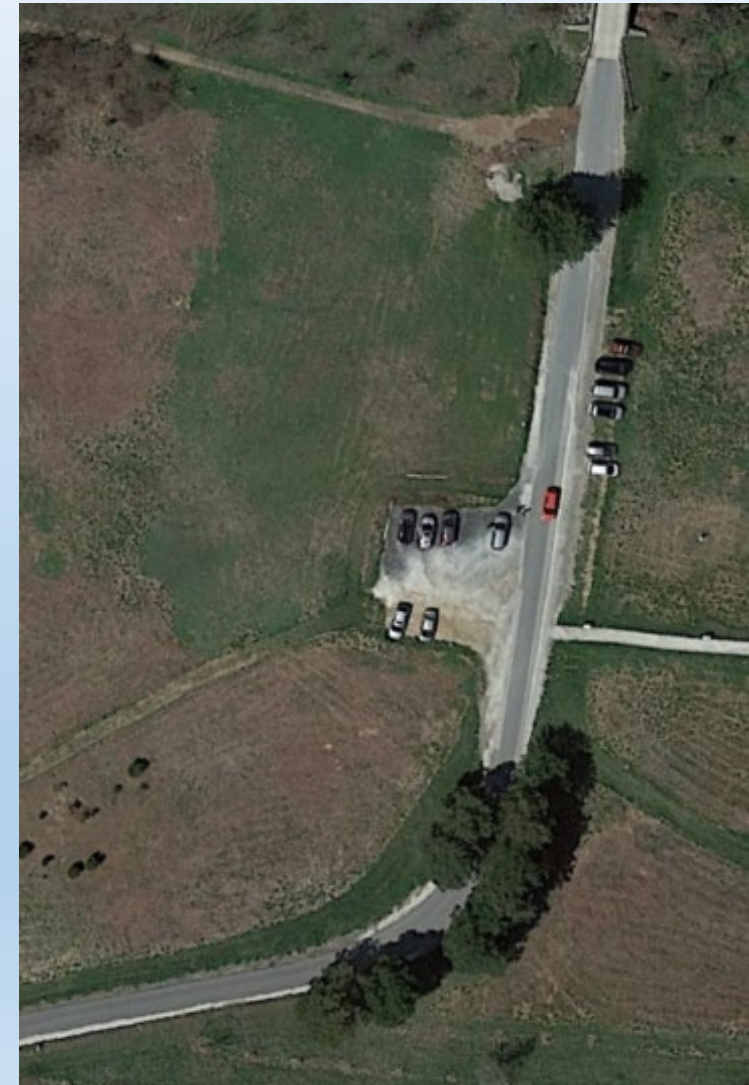
OVERFLOW PARKING LOT INFO:
PARKING SPACES PROVIDED: 86 SPACES
ADA SPACES REQUIRED: 4 SPACES
ADA SPACES PROVIDED: 8 SPACES



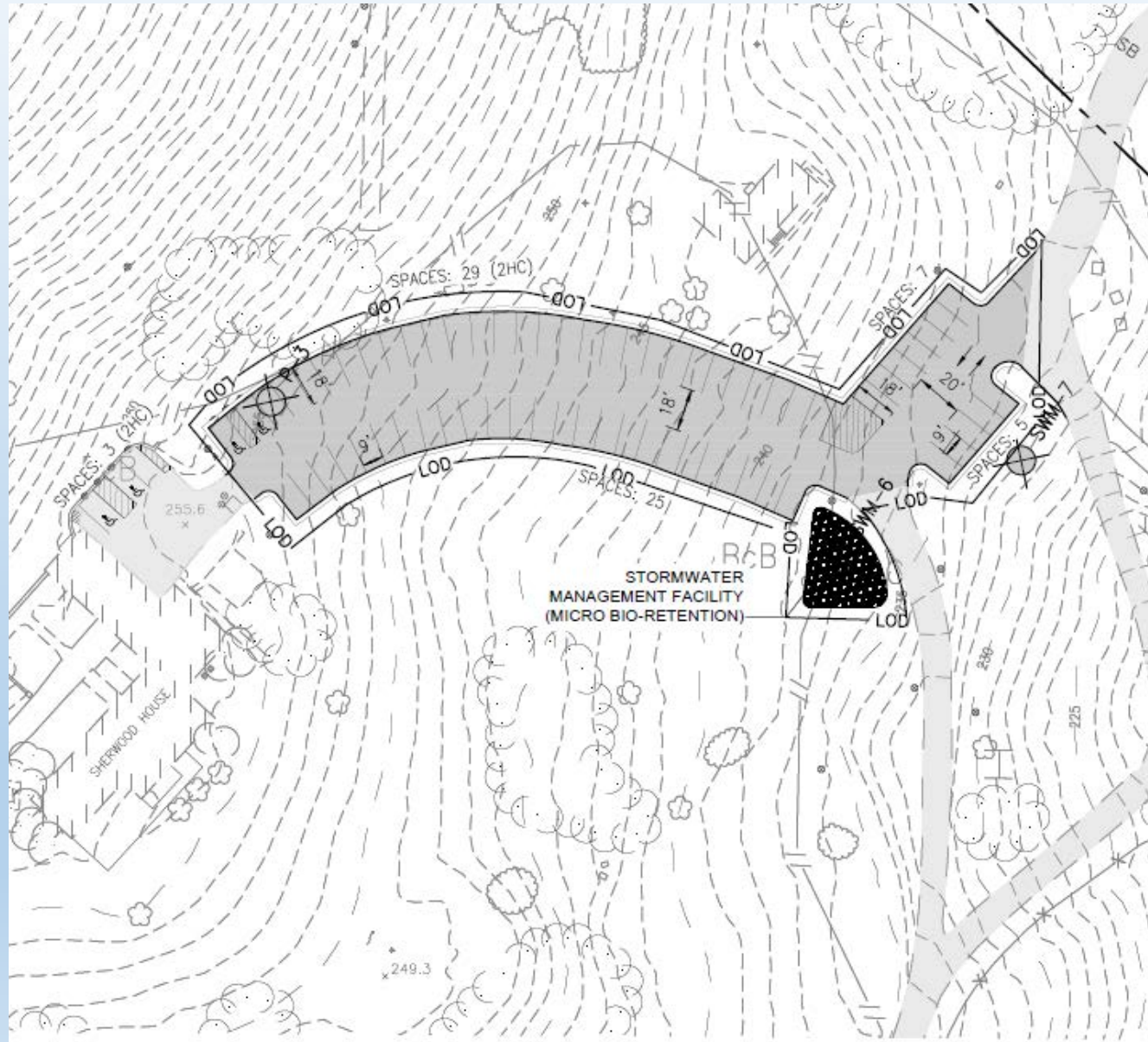
Willow Grove Entrance Proposed Parking Expansion



EXPANDED PARKING LOT INFO:
PARKING SPACES PROVIDED: 47 SPACES
ADA SPACES REQUIRED: 2 SPACES
ADA SPACES PROVIDED: 0 SPACES



Sherwood House Proposed Parking Expansion



SHERWOOD HOUSE PARKING LOT INFO:
PARKING SPACES PROVIDED: 69 SPACES
ADA SPACES REQUIRED: 3 SPACES
ADA SPACES PROVIDED: 4 SPACES

