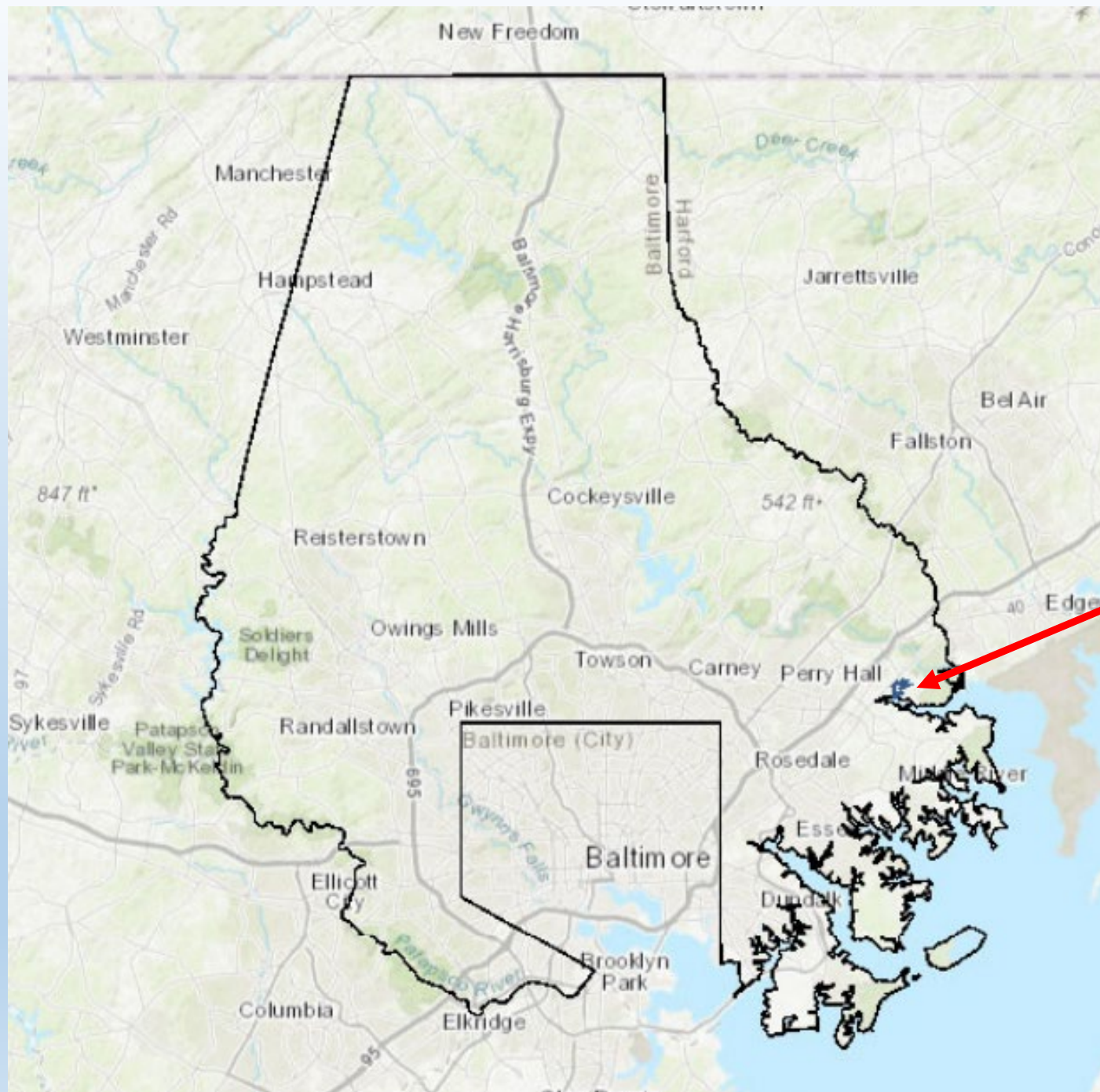


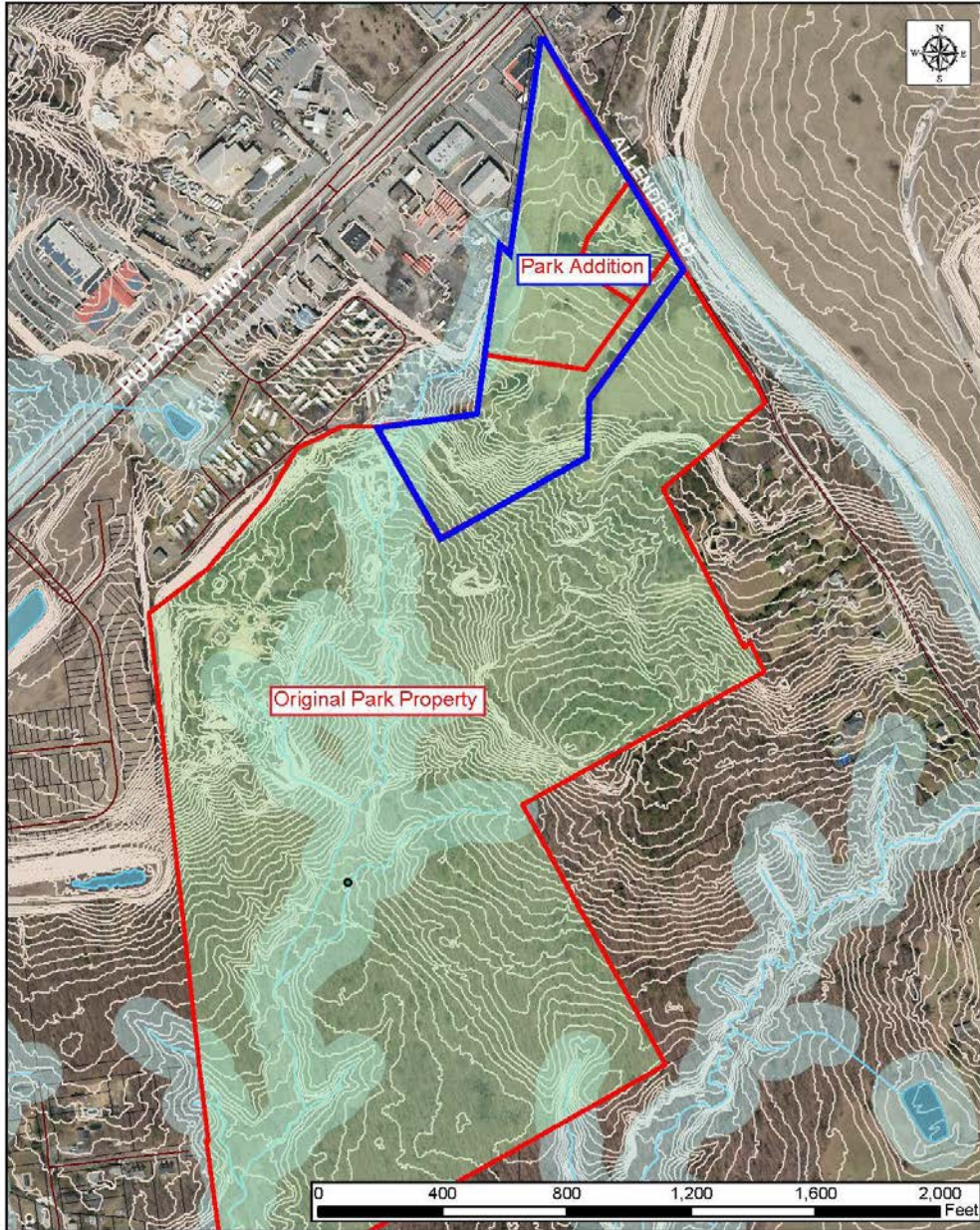
# Days Cove Park Site

Proposed Park and Disc Golf Course



Days Cove Property

## DAY'S COVE PARK SITE



Aerial photography flown Spring 2017. Map created by the Baltimore County Dept. of Recreation and Parks, March 2021..

## Days Cove Park Site

Total Acreage including park addition: 83.77

Original park land was acquired in 1987

A 14.1 Acre Park Addition was acquired in 2016-2017 for the purpose of future development including parking

3 Parcels were purchased in two separate acquisitions at A cost of over \$1.6 Million.



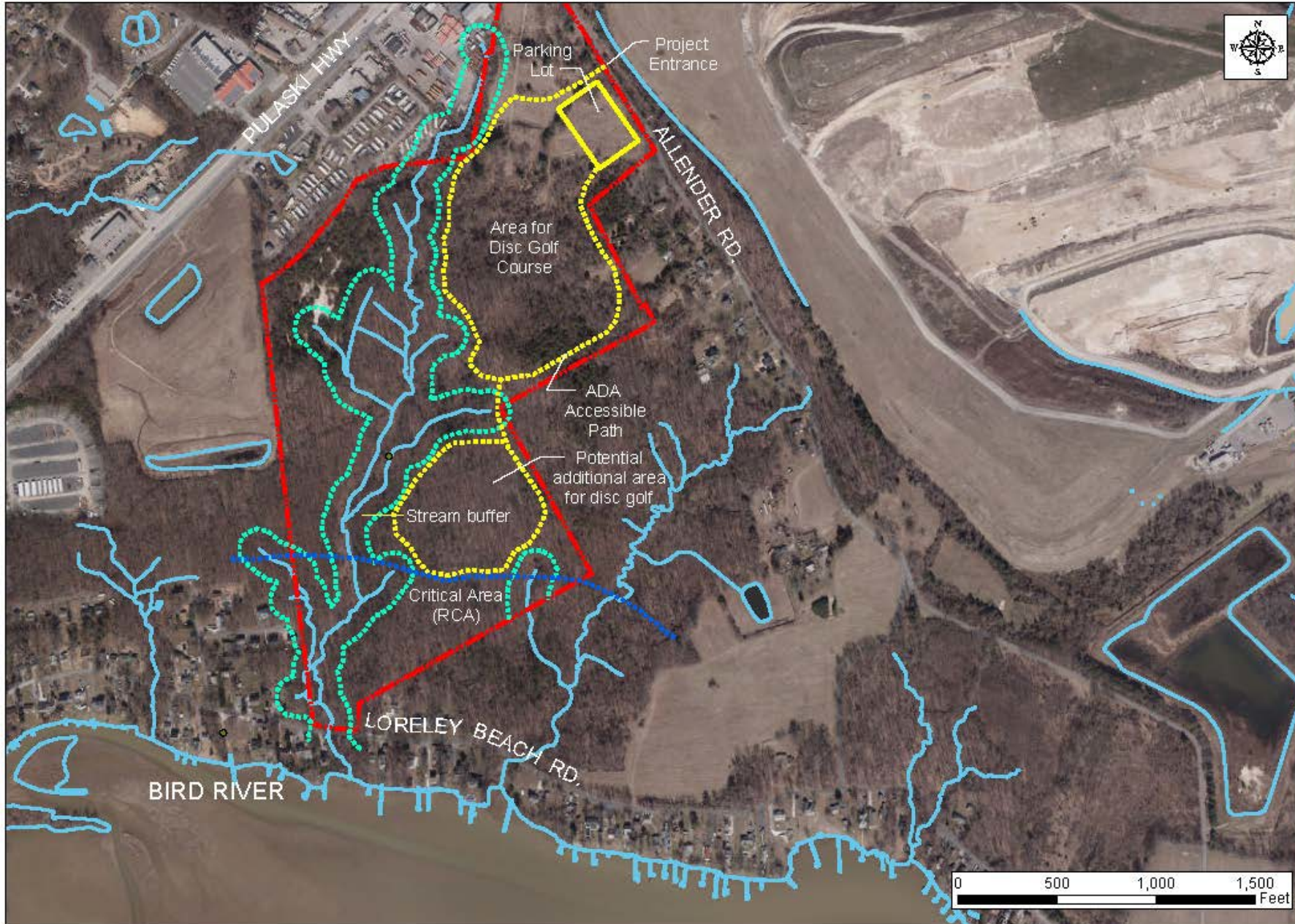


© 2023 Google

Google Earth

**Days Cove**  
**Constraints and Concept Layout Map**

83.77 Acres



- Property Line
- - - Proposed Path
- Stream Buffer
- Critical Area

# CAPE HENLOPEN STATE PARK

Approximately 20 Acres



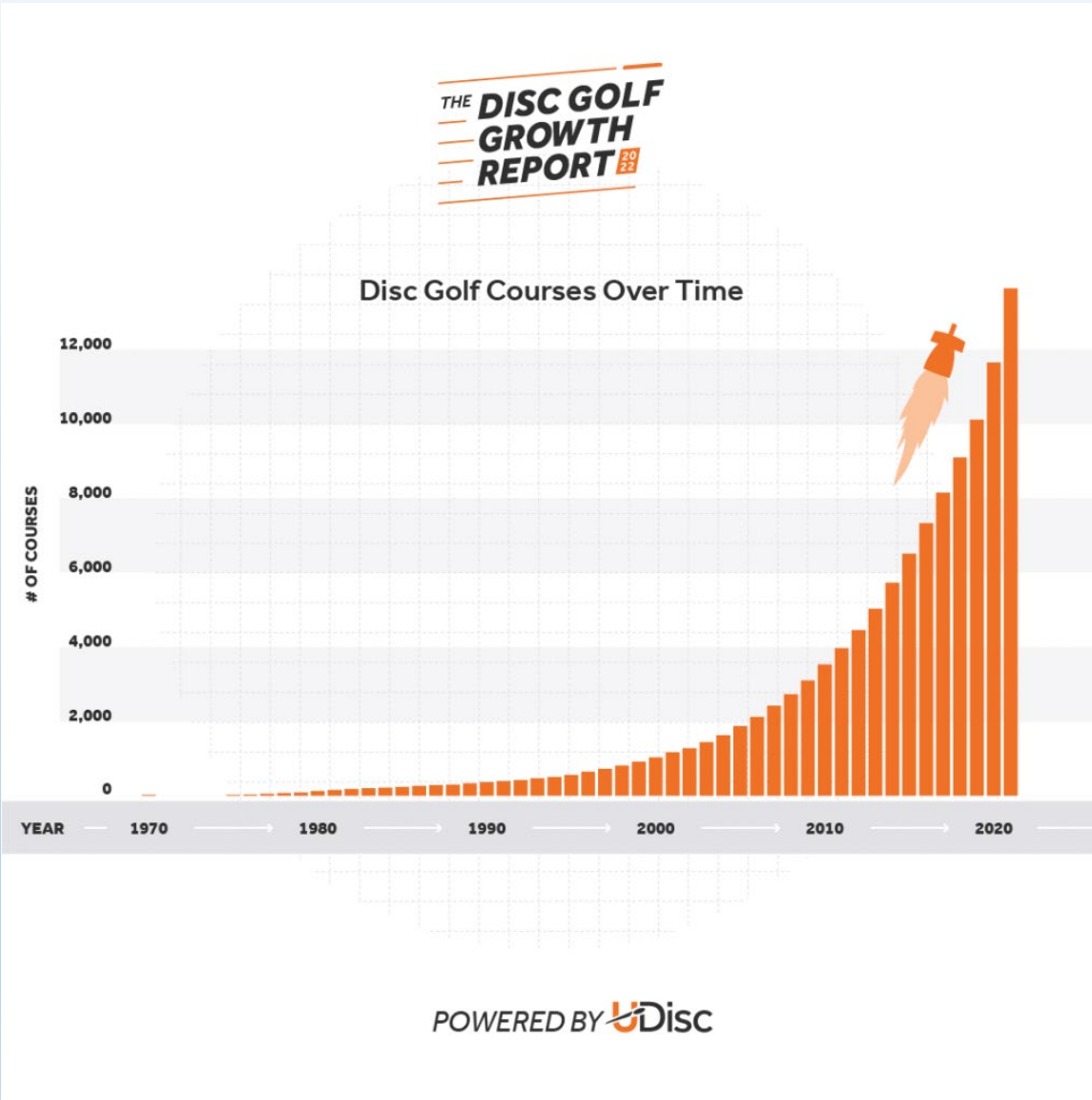
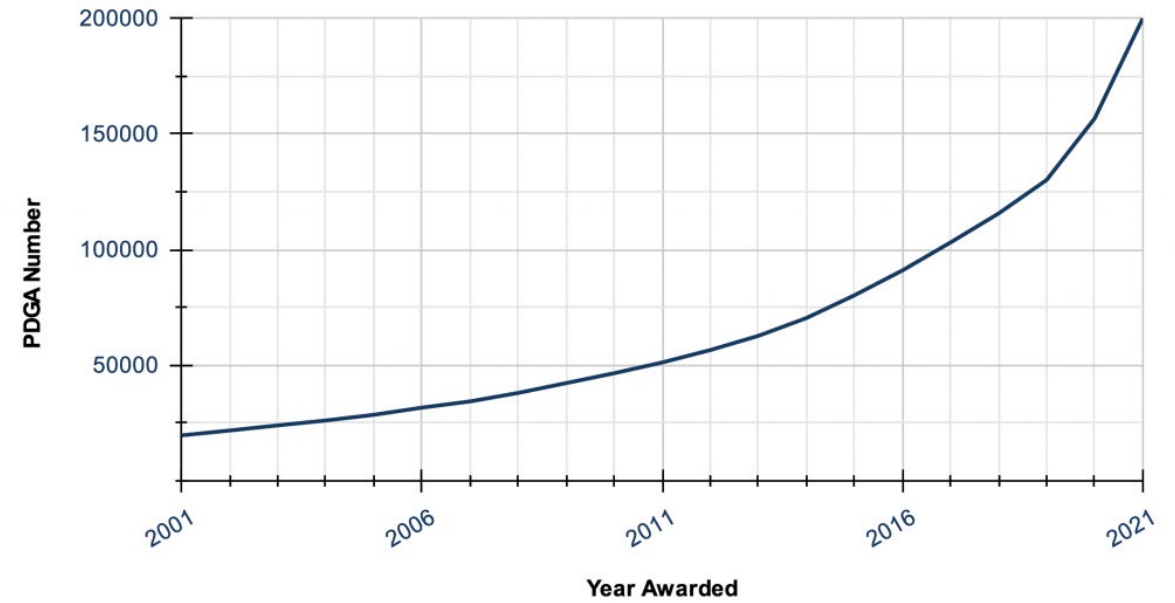
# What Is Disc Golf

A game in which a concave plastic disc is thrown into each of a series of metal baskets situated on an outdoor course, the object being to complete the course using the fewest possible throws.

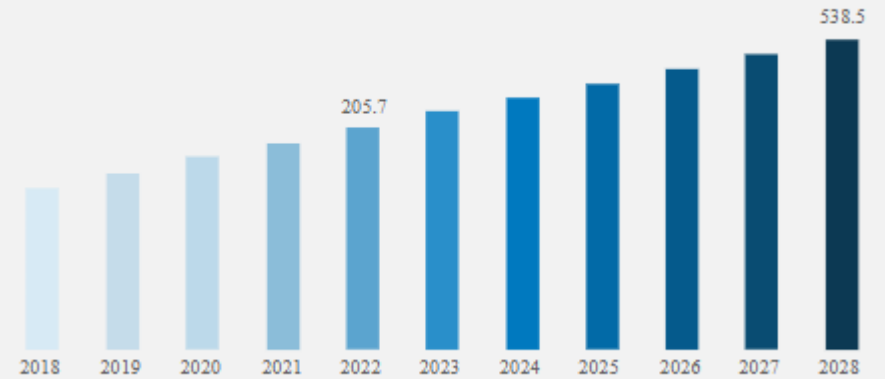


# Professional Disc Golf Association (PDGA)

## PDGA Member Growth Since 2001



## Global Disc Golf Market Size, 2028 (USD Million)







# We Want Your Input

[capitalprojects-rp@baltimorecountymd.gov](mailto:capitalprojects-rp@baltimorecountymd.gov)

